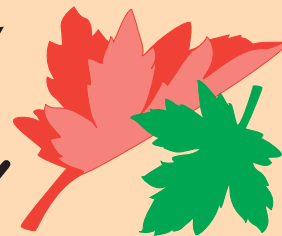




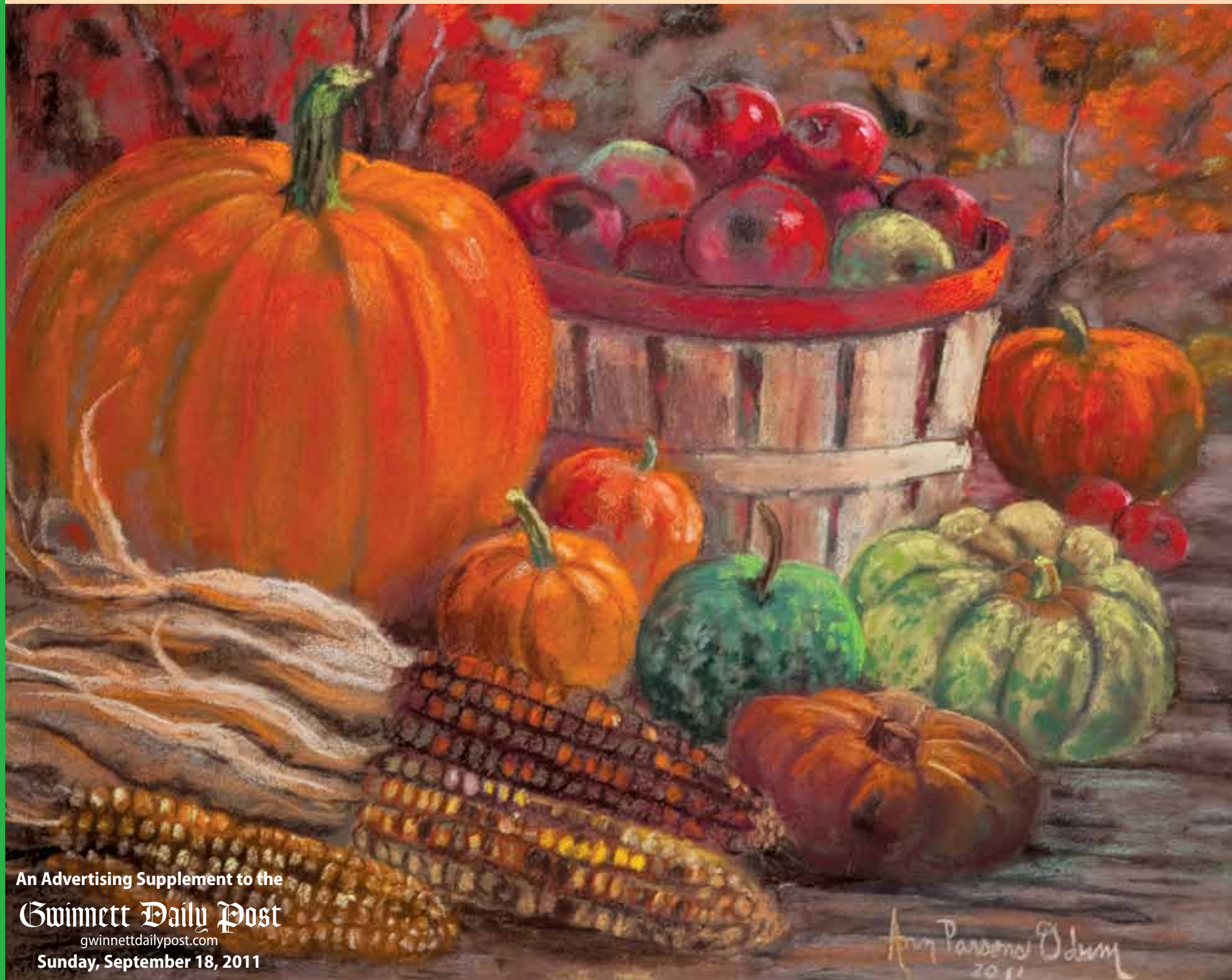
2011

Duluth

29th Annual FALL FESTIVAL



Historic Downtown Duluth • Rain or Shine • Free Admission • Complimentary Shuttle • www.DuluthFallFestival.org • Saturday, Sept. 24th • Sunday, Sept. 25th



An Advertising Supplement to the
Gwinnett Daily Post
gwinnettdailypost.com
Sunday, September 18, 2011

Duluth

29th Annual FALL FESTIVAL

2011 Duluth Fall Festival Sponsors

WE GRATEFULLY ACKNOWLEDGE THEIR HELP AND SUPPORT.

KEYSTONE SPONSOR

Gwinnett Community Bank

CORNERSTONE SPONSORS

104.7 The Fish
AGCO Corporation
Gwinnett Daily Post

MAJOR SPONSORS:

ROAD RACE SPONSOR

Gwinnett Medical Center - Duluth

FESTIVAL CONCERT SPONSOR

SCANA Energy

PARADE SPONSOR

American Family Insurance

FESTIVAL DECORATIONS SPONSOR

Fairway Carwash - The Eskenazi Family

GENERAL STORE SPONSOR

Lou Sobh Automotive

TASTE OF DULUTH SPONSOR

Payne-Carley House

COMMUNITY LUNCH

Suzanna's Kitchen - Barbara Howard

ENTERTAINMENT & SHUTTLE SPONSOR

Gwinnett Community Bank

MILITARY SPONSOR

Hugs for Our Soldiers

PLATINUM SPONSORS

Barkhill Sound - Earl Griffith

Brooks Coleman, State Representative

Champion Windows Company

David Shafer, State Senator

J.O. King - Russ Sheldon

Mathias Corporation - Dave Heyding

News/Talk WSB

Parsons of Cumming

Solutions Marketing

Wells Fargo

EMERALD SPONSORS

Heck Design Group

Hennessy Jaguar Gwinnett

Howard Brothers Hardware

Michael Robbins

Printing Trade Co - Mark Williams

Signs by Tomorrow

Talk 920 WGKA Atlanta

DIAMOND SPONSORS

Align the Spine Wellness Center

Atlanta Hawks

Andersen, Tate, & Carr

Bass Pro Shops

Bath Fitter Atlanta

BB&T - Duluth
Capital Remodeling
Chocolate Perks
Clearbuilt Technologies
Costco Wholesale
Delta Community Credit Union
Duluth Animal Hospital
Duluth Fine Wine & Spirits
Espy Financial Group
Fisher & Phillips - C.R. Wright
Flagstar Bank
Fresh Start New Beginnings
Georgia Force
Green South Equipment - John Deere

Gwinnett Braves
Gwinnett Gladiators Hockey
Gwinnett Medical Center Foundation
Home Energy Solutions
Illuminating Design
LeafGuard of North Georgia
Legacy Academy
Malool Family Chiropractic
McClellan, Allen & Associates
Miche Bags by Melanie
Noble Village Senior Living
Peachtree Children's Dentistry
Publix at Duluth Station

PURE Taqueria
Rainbow Village
Right to Hike
Rock, Paper, Scissors
Scorpion's Motorcycles
Smoothie King - Duluth
Southern Window & Siding
Sun & Ski Sports
Taylor Construction Co.
The Duluth Montessori School
The Epoch Times
Thompson & Sweeny
T-Mobile
Tutor Force
Vital Link Satellite - Dish Network

GOLD SPONSORS

Affiliated Graphics
All Event Rentals
Atlanta Flooring Design Centers
Larry & Lea Bay
Corporate Expressions
Dennis Taylor and Co.
John A. Monk, C.P.A., P.C.
Peachtree Christian Hospice
Wilson Lewis CPA
Woody's Nursery

SILVER SPONSORS

American Legion Post #251
AP Motorworks
Bill Head Funeral Homes
Burger King - Duluth
Cander Flags of Atlanta
Country Inn & Suites - Gwinnett Place Mall
Duluth Merchants Association
Flex HR
Georgia Power Company
Harold Stamey, CPA
Imagescapes
Kauffman Tire
Luv for Art
Miss Cindy's Dance Studio
Planet Fitness
Slade Lail, DDS
Sonic Drive-In
Stantec (Formerly Street Smarts)
Stars and Strikes
Steverino's
Stoney River
Tapp Lumber Company
Taylor's Collision
The Georgia Trail
The McCart Group
Vulcan Materials
Wallace Reid Portraiture
Westbrook, McGrath, Bridges, Orth & Bray
Wolfgang Auto Repair

FRIENDS OF THE FESTIVAL

Jim & Terrie Adkins
Dave & Christa Cook
Elliott & Barbara Brack
Faye Edmundson
Ronnie & Vicki Frost
Sheldon & Janet Greenwald
Jennifer Gregg
Charles & Rosemary Hall
Jim & Julie Hall
Mayor Nancy Harris
Amalie Helbert
Eric Holmes
Jim and Jane Johnson
Billy Jones
Kelly & Kimberly Kelkenberg
Mike & Kay Montgomery
Tim & Denise Montroy
Candace Morgan
Alana Moss & Scot Femmer
Mary Kay Murphy
Ann Parsons Odum
Greg & Cherie Pritchard
Fred & Dorothy Rainey
Russ & Melanie Sheldon
Lucile Walker
Ray & Rayann Walker
Kathryn Parsons Willis

"Mix a bit of Desperate Housewives with Sex and the City and Mamma Mia and you've got the hit Girls Night: the Musical" - Las Vegas Round The Clock

Girls Night

The Musical

ON
SALE
NOW!



Gwinnett Center
Performing Arts Center

September 29 ~
October 2

Featuring a specialty cocktail hour!

Special group rates are available!

Email groups@gwinnettcenter.com
for more information!

WWW.GWINNETTCENTER.COM

About Our Cover

This year's cover was created by local artist Ann Parsons Odum. Since 1985, all tabloid covers have featured either a Duluth or fall theme created by a local artist. Over the years, Ann's paintings have been used in numerous times.

During the Festival, Ann will be at the General Store signing copies of her new book about Duluth's History. It features more than 80 full-color pictures of Ann's paintings of Duluth, and includes the history behind each one. A portion of the proceeds from each book sold will be donated to the Fall Festival committee for improving downtown Duluth. So, be sure to stop by the General Store to meet Ann and to see her new book.



Duluth



YOU'VE HEARD THE BUZZ

[Now Try the Best! Coming soon to downtown Duluth]

Critics rave. Atlanta loves PURE. And still, you haven't tried the city's best margarita - a tart, refreshing cocktail that packs a punch and makes you forget your midweek blues. You've missed the mouth watering shrimp tacos with poblano slaw, chipotle mayo & cruda tomatillo salsa. PURE's ceviche' - fish cooked in lime, orange, tomato, red onion, celery and cilantro - has never crossed your lips. And the spicy Mexican style meatballs with chipotle tomato sauce we call Albondigas - are calling your name!

This place has earned the buzz - the praises all ring true. And now PURE taqueria is coming to downtown Duluth. Check us out at the Duluth Fall Festival. Then stay tuned for our **grand opening Monday, October 3rd.** *Can't wait to meet ya neighbor!*

Lunch | Dinner | Brunch

3108 Main Street | Duluth, GA 30096 | 770.622.2474

Find us on Facebook at PURE taqueria Duluth | www.puretaqueria.com

Welcome to our 29th Annual Duluth Fall Festival

Returning to the Festival this year is Gold Medal Show's carnival. The carnival will be open pre-Festival, from 6 p.m. to 10 p.m. Wednesday, Thursday and Friday.

On Saturday morning, the Festival begins. Both Saturday and Sunday start with a special opening event kicking off the day's festivities. After the opening events, stay and browse the Festival grounds. You will enjoy almost 400 vendors from the southeast featuring unique fine arts and crafts as well as all kinds of wonderful food.

Saturday, at 10 a.m., the day starts with a fantastic parade. With an anticipated 100 groups, the Festival Parade celebrates Duluth's sense of community. A colorful assortment of drill teams, cheerleaders, sports teams, dance troupes, Boy Scouts, Girl Scouts, politicians, first responders, soldiers and musicians will travel the parade route, tossing candy and waving to spectators. Immediately after the parade, join us at the Festival Center Amphitheatre to honor local dignitaries in the Opening Ceremony. The Parade Grand Marshal, Stewart Cink and Honorary Grand Marshal, Dr. Miles Mason, III will be featured, as well as soldiers from Fort Benning. The Opening Ceremony is also the Festival's opportunity to acknowledge our generous sponsors.

Sunday, at 8 a.m., the day starts with a 5K Road Race, followed by an outdoor worship service at the Duluth Festival Center. Both days, a variety of entertainment will run continuously on two stages including: music, dancing, singing, and acrobatics.

We hope you plan on spending the whole weekend at our Festival. You won't want to miss it!

Wayne Herman
2011 Duluth Fall Festival Chairperson

Arts & Crafts

More than 250 carefully selected artists and crafts persons will line the Town Green and streets of Duluth at the Festival this year. Vendors offer everything from paintings and photographs, wood crafts, pottery and glassware, furniture, floral arrangements and decorative accessories, baskets, adult and children's clothing, doll clothes and toys, jewelry, candles and soap, stitchery and more. Warning: You are bound to find something to take home!

Most vendors are local or from the across the southeast. However, with our growing reputation as one of the best festivals in the southeast, we are fortunate enough to have one vendor from as far away as Ohio.

Several of the same Arts & Crafts vendors return to the Festival year after year; some have participated for many years. Bill Crissey, of Gwinnett Gallery, holds the record, participating in all 29 Festivals! When possible, returning vendors are located in the same general area. However, if you have trouble finding a specific vendor, visit the Information Booth on Main Street or ask one of our Zone Coordinators (a volunteer with a walkie-talkie) for help. They will gladly guide you to the vendor that you are seeking.

The Arts & Crafts committee works hard to have a variety of merchandise, with as little duplication as possible. This year, they reviewed more than 330 applications to choose the vendors.



About the Duluth Fall Festival

Beautification of Duluth

Proceeds from the Festival are used towards improving and beautifying historic downtown Duluth. The Festival has spearheaded numerous special projects, including purchasing and developing Taylor Park (including the arched entryway), paving and landscaping the Festival Center Courtyard, increasing the public restrooms, purchasing planters, landscaping the streets of Duluth, and, most recently, purchasing and installing the Eastern Continental Divide Monument on the Town Green.

By far, the largest Festival undertaking was building the Duluth Festival Center Amphitheatre. It was built as a complementary addition to the Town Green, which was developed by the City and included amenities such as a fountain, brick walkways, curved walls, lantern posts and landscaping. Since then, a children's playground was added, and, most notably, the new City Hall.

Community Fellowship

Although the annual Festival is the organization's biggest claim to fame, developing relationships and fellowship is

another important goal. In a world where many people don't know their own neighbor and seek community roots, we are proud to offer a pathway for people to develop life-long friendships through community connections.

To promote these budding friendships, the Festival committee sponsors many activities throughout the year, including: monthly meetings, downtown work days, a Summer Rally, an annual cookout, the Taste of Duluth, an annual community luncheon (for sponsors, volunteers, city workers, first responders, and others), a community Christmas Tree Lighting, and the Duluth New Year's Eve celebration. The Festival Mission is to improve downtown Duluth as well as the lives of its citizens.

Growth of the Duluth Fall Festival

The Duluth Fall Festival celebrates its 29th anniversary this year. The Festival has grown and changed immensely from its humble beginnings. Since 1983, the number of separate committees has gone from 3 to more than 50, the number of volunteers has grown from 25

to almost 400, the number of Arts & Crafts and Food booths from less than 40 to more than 350, and the crowds have increased accordingly. Today, the Duluth Fall Festival is one of the most successful festivals in the southeast, and is run completely by volunteers.

Through the years, the Festival has continued to grow and change. In 1985, the first official T-shirts were donated by Tom Martin of Citizen's Bank. They are a much sought-after item, and many sponsors join the Festival ranks just to get their names on the shirt. The Sponsor committee was added 14 years ago, and now the Festival has more than 100 sponsors who, when combined, contribute more than \$100,000 every year.

If you are interested in volunteering with the Festival, we would love to have you. For information, send an e-mail message to dffMembership@gmail.com, or visit our Web site at www.duluthfallfestival.org, or see any volunteer.

Kathryn Parsons Willis



The Best of Brews

30 Draft Beers To Go & Draft Root Beer on Tap
DULUTH FALL FESTIVAL SATURDAY SPECIALS

1/2 Price 64 oz. with purchase of Beer Fill
12 oz. & 32 oz. Draft Beers
Draft Root Beer by the Glass or Growler*



Sunday Specials

1/2 Price - 64 oz. Growlers (does not include beer)
Draft Root Beer by the Glass or Growler

***GROWLER:** A capped and sealed glass jug to bring
Draft beer (or Root Beer) home or to the Duluth Green
(On Red Zone Days)

3099 Main Street, Duluth, GA: located at the corner of West Lawrenceville and Main Streets



Man's Corner at the Festival

Just imagine a place at the Festival dedicated to and for men--stuff with no lace on it! Yes, you are reading correctly, the Duluth Fall Festival has a special section devoted to products and services that men love. Come on over and see for yourself. Dads, bring your sons; guys, bring your friends; sons, bring your dads; and wives

bring your husbands. "Man's Corner" will feature two big-screen TVs with satellite reception so you can keep an eye on your favorite FOOTBALL team. You will also find Bass Pro Shop's ATVs, Howard Brother's Zero Turn mowers and Stihl power tools, Green South's John Deere Gators, Big Green Egg grills, and a putting green from Georgia Trail.

You can also visit Gwinnett's sports teams, the Gwinnett Gladiators, Gwinnett Braves and Georgia Force. And, of course, there will be the latest model cars from Lou Sobh, and Hennessy Jaguar. So, follow the signs to "Man's Corner" (located between the Festival Center and City Hall), and have a great time!

Personally appearing Saturday... Walter Reeves The Georgia Gardener™



Man's Corner:
12 p.m. to 1 p.m.
Gazebo Stage:
1 p.m. to 3 p.m.

General Store & Auction

If you are looking for fall seasonal items or Festival-related wares, the Festival General Store is the place to go. You can find it all there, including Festival T-shirts from previous years and copies of the current newspaper tabloid as well as older ones dating back to the beginning of the Festival. And this year, Ann Odum, one of the founders of the Festival, will be at the General Store signing her new book on Duluth's history.

Besides being your Festival merchandise headquarters, the General Store is also an easily spotted landmark. You'll recognize it as the tent surrounded with fall decorations, complete with mums, pumpkins and scarecrows. It is centrally located on Main Street and all volunteers can guide you to it. For several years the Festival General Store has been sponsored by Lou Sobh. At 3 p.m. on Sunday, come to the General Store for the auction of the pumpkins and mums used to decorate the Festival.



Shout it out loud... the Silent Auction has a new location this year, on Main Street in front of City Hall. Our new loca-

tion enables us to have a bigger tent with more room for shopping and bidding. The Festival will host five auctions during the weekend, three on Saturday, and two on Sunday. We have a variety of great merchandise donated by Festival vendors and local busi-

nesses, including many restaurant and service-oriented gift certificates, and gift baskets of all kinds.

Silent Auction Schedule
Saturday - 1:00 p.m.,
3:00 p.m., 5:00 p.m.
Sunday - 2:00 p.m., 4:00 p.m.

Festival Welcomes Soldiers Home from Iraq

Even when the fall colors are upon us, Duluth still shines in red, white and blue! Come join us Saturday morning along the parade route to welcome back to Duluth more than 100 Soldiers from Fort Benning's 1st Battalion, 15th Infantry Regiment. These "CAN DO" Soldiers will be led through the streets of Duluth by their Commander, Lieutenant Colonel Nelson Kraft and his S3, MAJ Pat Douglas.

"We have a long summer training cycle. We're in the field 1 through 23 September and then again 2 through 20 October" said LTC Kraft. This small break in training gives

them just enough time to come and be a part of the Duluth Fall Festival. "We're looking forward to this event," said MAJ Douglas.

Arrive early to get your spot along the Parade route. Watch for our Festival volunteers to hand out flags. These 1-15 soldiers have seen combat four times in Iraq, so take this opportunity to cheer

them on as they pass you by.

After the Parade, be sure to attend the Opening Ceremony where the 1-15 Soldiers will be recognized for their service to our country. Later, stop by Hugs for Our Soldiers' booth on Town Green to meet and shake the hands of these American Heroes, and learn how you can send a care package to our deployed troops

this Christmas.

The soldiers' memorable weekend in Duluth is made possible by Hugs for Our Soldiers, Russ & Melanie Sheldon, Dave & Buster's, Burger King (Duluth), Country Inn & Suites, and the Duluth Fall Festival.

To learn more about Hugs for Our Soldiers, go to:
www.hugsforoursoldiers.org



Dr. Miles Mason, III Honorary Grand Marshal

This year, our Honorary Grand Marshal is Duluth's own Dr. Miles Mason, III. For many years Dr. Mason has served as Chief of the Medical Staff for Gwinnett Medical System, which has more than 800 associated physicians. Dr. Mason grew up in Duluth and graduated from Duluth High School. He completed his education at Emory Oxford, Emory University and the Medical College of Georgia. He, along with his brothers and sister, own Mason Primary Care in Duluth. Dr. Mason resides in Duluth with his wife, Sandy, and three children. He is greatly respected and loved in this area, and we are proud to have him represent our Festival and Duluth.

Dr. Mason, III follows in the footsteps of his father, Dr. Miles Mason, Jr., who was one of the first and longest-serving doctors at Joan Glancy Hospital in Duluth. Dr. Mason, Jr. also served as Chief of the Medical Staff of the entire Gwinnett system, and also was honored as Grand Marshal for the Festival (in the early 1990s).



FRESH START NEW BEGINNING

CHRISTIAN CHURCH

"Where All Things Are Made New"

2 Cor. 5:17

Tune into AIB every
Sunday at 3:30 pm to
watch Pastor Terry
teach the Word
of God

Sunday Worship Service 10:00am
Thursday Bible Study 7:00pm
Childrens Church available at
every service

FSNB CHRISTIAN CHURCH

"A Teaching Ministry"

2965 Duluth Hwy 120
Duluth, GA 30096

Pastor Terry & Lynda Starks

visit us: www.fsnbcc.com • 770-797-9049



Sugarland
THE INCREDIBLE MACHINE
TOUR 2011
WITH SPECIAL GUEST
SARA BAREILLES
OCTOBER 22 TICKETS ON SALE NOW!
PHILIPS ARENA
TICKETS AVAILABLE AT ALL [ticketmaster](http://ticketmaster.com) OUTLETS, ONLINE AT TICKETMASTER.COM OR BY PHONE AT (800) 745-3000.
iLIVE ALL ACCESS FOR VIP PACKAGES AND MORE GO TO WWW.SUGARLANDMUSIC.COM

PARKING & SHUTTLE – Parking in downtown Duluth is limited. To avoid stress, the Festival committee recommends that you park offsite at one of the following designated lots, and take the free shuttle.

Shuttle Information

Shuttle	Parking Lot	Festival Stop
Blue	Glancy Outpatient Building 3855 Pleasant Hill Road	Monarch School 3057 Main St.
Green	Chattahoochee Elementary School 2930 Albion Farm Rd.	
	Gwinnett Community Bank 2775 Buford Hwy.	
Yellow	Mason Elementary School 3030 Bunten Rd.	
Hours (shuttles run every 15 minutes)		
Day	From	To
Saturday	8:00 A.M. *	7:00 P.M.
	Suspended Service During Parade: From 9:45 a.m. to 12:00 p.m. shuttle service is suspended because Hwy 120 will be closed.	
Sunday	10:00 A.M.	6:00 P.M.



*"Changing Lives
in the Name of Christ"*

**Duluth First
United Methodist Church**

3208 Duluth Hwy 120 • 770.476.3776 • www.duluthumc.org

Join us for worship on the Town Green
at 10 a.m. on Sunday, September 25th.

Come see us at the Funnel Cake Booth!
All of our profits go to Youth Missions Outreach.

Sunday Worship Services:

- Traditional Worship:
8:15, 9:30 & 11:00 a.m.
- Contemporary Worship
in the Grand Hall: 9:30 a.m.
- Children's Worship (grades K-5):
9:30 a.m. in the Youth Center
- Childcare provided during all services.
- Sunday Night Youth: 5:30 p.m.
in the Youth Center

Wednesday Evening Programs:

- Dinner at 5 p.m. with Bible Studies and
Ministries for Adults, Youth and Children until 9:00 p.m.
- Youth Group Worship & Bible Study:
6:30 p.m. in the Youth Center
- T.L.C. - Together Learning about Christ (grades K-4): 6:00p.m.
- 5th Grade Bible Study: 5:45 p.m.
- Book Bunch (ages 3-4): 6:10 p.m.
- Children's Choir Rehearsals (ages 3-5th grade): 6:30 p.m.

**GAS SOUTH
BROADWAY SERIES**
2011-2012

**4-SHOW SUBSCRIPTIONS
START AT ONLY \$125**



Rain
A TRIBUTE TO THE BEATLES
DIRECT FROM BROADWAY
"THE BEATLES ARE BACK!"

OCT. 28-30, 2011



My Fair Lady
"The World's Greatest Musical!"

DEC. 8-11, 2011



blast
WINNER! 2001 TONY AWARD
"BEST SPECIAL THEATRICAL EVENT!"
"A high-powered, cutting-edge show like you've never seen before!"

JAN. 19-22, 2012



Young Frankenstein
"A high-powered, cutting-edge show like you've never seen before!"

MAR. 29-APR. 1, 2012

ACCESS THE ARTS
"TEST DRIVE" YOUR SEATS AUG. 21 & 22
PICK YOUR SEATS IN PERSON,
WIN PRIZES & MORE!

**CALL 770.916.2852 OR VISIT
GASSOUTHBROADWAYSERIES.COM**



COBB ENERGY
PERFORMING ARTS CENTRE



Duluth Fall Festival



Duluth

Opening in downtown Duluth October 3, 2011

Lunch | Dinner | Brunch

3108 Main Street | Duluth, GA 30096 | 770.622.2474

Find us on Facebook at PURE taqueria Duluth | www.puretaqueria.com

Duluth

Capture the Spirit of Good Living



This page is brought to you by the City of Duluth & the Historic Duluth Society.

The Duluth Historical Society

presents

Chattapoochie Pet Fest

Sunday, October 2nd • 10am-5pm

City of Duluth unveiling new DOG PARK information!

Pet Costume Contest

A Special visit by "Digger Dog"



4 legged visitors are invited to bring their well behaved 2 legged masters. Proceeds benefit the Historic Strickland House, home of the original Gwinnett Humane Society.



Sno Biz Treats

Milk Shakes • Ice Cream Shaved Ice • Smoothies Nachos • Hot Dogs Cookies and more!!

3107 Main Street, Duluth, GA 30096

678-682-8383

FREE WiFi

TR DYE 4 net

Kids Parties • Balloons • Cakes • Treats

Full Service Bakery Now Open

Great Coffee, Fresh Donuts, Evening Desserts, Inside Seating, Duluth Green Seating, Groovy Music!

3107-B Main Street, Duluth GA 30096



You have not had a Smoothie till you have had a "SMOOTHIE KING!"



Nutritional Lifestyle Centers
\$2 OFF 32 oz. Smoothie

4205-A Pleasant Hill Road Northwest
Duluth, GA 30097

770-497-3900

NOW ENROLLING



THE SCHOOLHOUSE
PRESCHOOL ACADEMY

An Ivy League Beginning

CALL FOR TUITION SPECIALS

(678) 240-2507



The Schoolhouse

is raising the bar for preschoolers ages 1-4 years old because your child deserves "An Ivy League Beginning."

For more info, visit us at
2466 Buford Hwy., Duluth, GA 30097
www.TheSchoolhouse.com



3127 Main Street
Duluth, GA 30096
770.495.1832



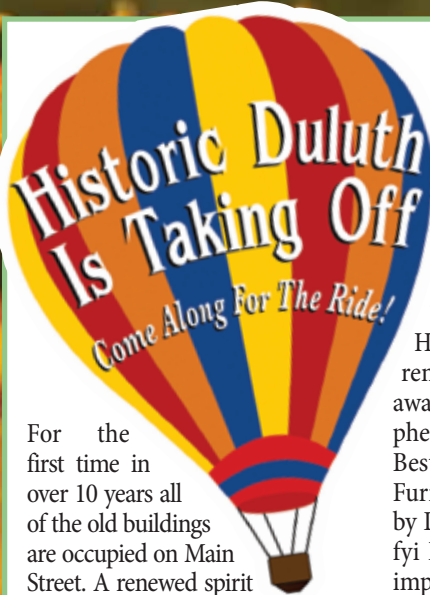
Luv for Art

~ OFFERING ~

- **CLASSES** Painting, Drawing & Photography
- **SUPPLIES** Paints, Canvas, Brushes, Sketch Pads & More
- **STUDIO TIME** Your Place to Get Away and Create
- **GALLERY** Local and Far Away Artists
- **SPECIAL EVENTS** Birthday Parties, Date Night, Group Events



bobbie@negosys.ca • www.luvforartduluth.com



Historic Duluth is taking off... come along for the ride!

For the first time in over 10 years all of the old buildings are occupied on Main Street. A renewed spirit is among the merchants as new businesses join the veterans who have persevered through the down turn of the economy.

Come hungry on your next visit to Historic Duluth! Our Main Street menu is expanding with the arrival of Pure Taqueria, Sno Biz, and Tie Dye 4 Bakery & Party Shop. The new eateries and fun spots are in good company with Steverino's, Park Cafe, Chocolate Perks and Boudreaux's Cajun Seafood. The Best of Brews (BOB) is our new

growler offering craft to-go beer on tap. Historic Duluth also has style in Rain the Salon and French Door Salon offering the latest trends in hair couture.

The merchants are proud of Huthmaker Violins, a world renowned violin maker and our award winning portrait photographer Wallace Reid. We have the Best of Gwinnett in Churchladies Furniture Consignment, Interiors by Designe and Chocolate Perks. fyi Duluth design studio a home improvement cooperative, offers a one-stop showroom to build. renovate. decorate. Other Main Street stars include Hardeman's Stained Glass, Focal Point Kitchens & Baths, Rare Purls, Nature's Elegance Floral Designs, Sassy Girl Design and The Work Spot, an innovative collaborative work environment. We also sport a little Hollywood on Main Street with Penny Dreadful Productions who provide art direction for film and television in addition to their world's first! Steam-punk studio and retail shop, The

Boiler Room Costumes, Props, & Oddities.

Weddings are our specialty. Ten year Main Street veteran Annabellagio is a beautiful boutique offering bridal accessories, jewelry, and clothing. Nuptials are hosted at the Duluth Festival Center, New Dawn Theater and for a story-book wedding, the Payne-Corley House. Historic Duluth surroundings make the perfect setting for wedding photographs with Duluth City Hall among the favorites.

Historic Duluth is committed to the arts and offer 2 theaters, the Red Clay and New Dawn. Duluth Art Gallery exhibits work of over 100 local and regional artists. Chocolate Perks is also an art gallery that features local artists while fyi Duluth design studio's Art of Living Gallery showcases artistic elements of interior design created by metro Atlanta artisans and furniture craftsmen. We welcome Luv for Art, an art gallery and working studio for artists of all ages

and talent. Consignment is a niche on Main Street and the Duluth Resale Cartel is comprised of Sensibly Chic, Churchladies, This, That & Other and Accessorize Again. You are encouraged to frequent the Main Street shops where it isn't a crime to steal a deal!

Chocolate Perks, Steverino's and Boudreaux's have live music. Thursday is Trivia Night at Steverino's, wine tastings take place on Wednesdays at Park Cafe and Chocolate Perks also offers wine tasting events. Art walks, Car Boot Sales, holiday celebrations and community events - lots to do on Main Street!

It is our unique charm that attracts people to Historic Duluth and our atmosphere of old and new that keeps people coming back. We are a place to call home, a place you can belong. Historic Duluth is taking off... come along for the ride!

For more information:
www.historicduluthga.net
www.duluthresalecartel.com

The Historic Duluth Society

The Historic Strickland House (circa 1898), home of Duluth History Museum, is a nearby extension of our historic downtown, available for tours and events.

www.duluthhistorical.org

Join Us

Last Saturday of Each Month

Weather Permitting -
10am to 2pm
(except in September during Fall Festival)



A car boot (trunk) sale is an English tradition where people pack their cars, meet at a designated place, pop their trunks and sell their wares. For details visit www.historicduluthga.net



**Bloomin' Pots
Garden Shop
& Outdoor Living**

**Duluth Festival Special
10% Off All Planters**

770.851.9339
info@bloominpots.com
www.bloominpots.com

Showroom: fyiDuluth
3097 Main Street
Downtown Duluth

art of living
gallery
fyiDuluth
design studio

build. renovate. decorate.

A design team offering a one-stop showroom for all your home & garden improvements. Got a project? We can help.
3097 Main St., Duluth, GA 30096
www.fyiDuluth.com • 678.957.0009

annabellagio

Dress and accessories boutique.
Stop by & register for a \$100 gift certificate drawing during the festival.
3129-A Main St., Duluth • 770.963.8399
www.annabellagio.com

A collaborative open work space and meeting center. Memberships catered to individual needs.
25% off membership with this ad.



www.workatthespot.com • 770.330.1001



PROUDLY SERVING
Historic Duluth's
GRAPHIC & WEB
Design Needs

404.966.6363
www.iMadeThisInc.com



Church Ladies
770.476.4008



ELEGANCE



Come shop home furnishings on consignment, floral arrangements & interior design.
3578 W. Lawrenceville St., Duluth 30096

For Kids of All Ages: Carnival & Games

While you browse the Arts & Crafts booths, your kids can stay busy in the Games area. Back again this year, is a full-fledged carnival, with a variety of rides and activities including a merry-go-round and a Ferris wheel, where you can get a bird's eye view of the continually changing Duluth skyline.

Other exciting rides include the Orient Express, the Dizzy Dragon, Rio Grande train, swings and much more. The Midway will feature cotton candy, caramel apples, snow cones, and other standard fare. Gold Medal Shows, the carnival vendor, is a family business started in 1969 by owners Pat and Pam Guthrie. They strive to have a bright, clean, family-oriented show to enhance hometown festivals such as ours.

Next to the carnival, the Games area provides inflatable slides and activities for kids 7 and under. All of these activities are located on Main Street, across from City Hall. While you are in the Games area, you won't go hungry; booths nearby will be selling cotton candy, popcorn, drinks, and standard festival fare.

Carnival Hours: The Carnival will be open from 6 p.m. to

10 p.m., Wednesday, September 21 through Friday September 23, and then all day during the Festival.

Special Offer for Wednesday through Friday only: Gold Medal Shows is offering a buy 1 get 1 free armband for unlimited rides. Cut out the coupon in this tabloid or print a coupon at www.duluthfallfestival.org. You must have a coupon to get this offer.



Buy One Unlimited Ride Armband at \$20
GET ONE FREE
Wed, Thur, Friday ONLY
6 pm till 10 pm Sept. 21, 22, 23

GOLD MEDAL SHOWS



Present coupon at midway ticket box

One Coupon per Person. No Refunds, Exchanges, or Rainchecks.

Open ALL Day Saturday & Sunday

21 Wed Thru 25 Sun
Sept Sept
DOWNTOWN DULUTH



Where to Go for Help

If you need help while you are visiting the Festival, need assistance locating a specific vendor, are interested in purchasing a commemorative Brick for the Town Green, or if you lose an item, stop by the Information and Lost & Found booth located in front of the General Store. You can also ask any volunteer for assistance.

First aid is available at the Gwinnett Hospital System Care-A-Van located behind Huthmaker's Violins.




**Excellent
Care.**

**Excellent
Price.**

*Now is the time to discover Assisted Living at
Plantation South Duluth!*

Our monthly rate includes meals, laundry, housekeeping, medication management, 24-hour staffing, exercise program, abundant social and recreational activities, scheduled local transportation, and more.

Call 770-884-4648

today to schedule your personal tour and learn how you get more for less at Plantation South!

Assisted Living • Personal Care • Senior Day Program • Short-Term Stays

**Plantation
South**
Assisted Living Residence

3450 Duluth Park Lane
Duluth, GA 30096
(770) 884-4648
www.PlantationSouth-Duluth.com

Professionally managed by Senior Management Advisors, Inc.




Reba

ALL THE WOMEN I AM TOUR

WITH SPECIAL GUESTS
The Brand New Heavies
Steel Magnolias
and *Edens Edge*



**THE ARENA AT GWINNETT CENTER
SATURDAY, NOVEMBER 12**

TICKETS AVAILABLE AT ALL *ticketmaster* OUTLETS,
TICKETMASTER.COM OR (800) 745-3000

IN STORES NOW **REBA.com**



Festival Entertainment

Entertainment

More than 20 acts on two stages are scheduled for this year's Festival. There will be something for everyone. As always, Elvis (Duluth's own Mark Pitt) will be in the building to kick off two days of continuous entertainment. Throughout the Festival, puppeteer Kevin Pittman will be "on the street" to entertain children of all ages.

The **Festival Center stage** (the amphitheatre), features bands and dance groups. Dance acts on the Festival Center stage will include classical, ballet, modern and contemporary, Broadway show style, jazz, and tap.

The **Gazebo stage** (on the upper town green) hosts acoustic groups in an intimate setting. We will be showcasing a variety of music covering a wide range of appeal from

classic rock, acoustic pop, soul, and contemporary country music. There will be European and Americana folk music and dancers performing styles from Turkey, Spain, India, and West Africa.

After each performance, you can find the entertainers at the **Meet the Entertainers Tent** beside the stage. This is where to go to find out more information about your booking your favorite acts or purchasing their CDs, T-shirts and other promotional items. All of our entertainers perform non-gratis, so we encourage you to support them with a purchase of their wares.

Our performers sound great thanks to our wonderful volunteer sound staff. Our two primary sound engineers, Earl Griffith (Festival Center stage) and Michael Robbins (Gazebo stage) lend their own

equipment and run our sound systems during the entire Festival.

For more information about the entertainers performing at the Duluth Fall Festival, and links to their personal web sites, visit the Entertainment page on the Duluth Fall Festival Web site:

www.duluthfallfestival.com/entertainment.html



Festival Center Stage Schedule

Saturday			
Time	From	To	Performer
11:15	12:15		Opening Ceremony
12:20	12:25		Wildcat Cheerleaders
12:30	1:00		Mark Pitt
1:15	2:00		Grand Prize Winner From Last Year
2:15	3:00		Jay Hawks
3:15	4:00		7 Day Fool
4:15	5:00		The Cindy Brown Dancers
5:15	6:00		Gypsies on Parole

Sunday			
Time	From	To	Performer
7:40	7:55		Tammy Duffy and Marbry Lee - Professional Jazzercise Instructors
8:00	9:30		Road Race
10:00	11:30		Duluth First United Methodist Church
12:00	12:45		Priceless Performers
1:00	1:45		Royal Dance Academy
2:00	2:45		Grafted By Grace
3:00	3:45		Seconds From Falling
4:00	4:45		Ballroom Dance Clubs

Gazebo Stage Schedule

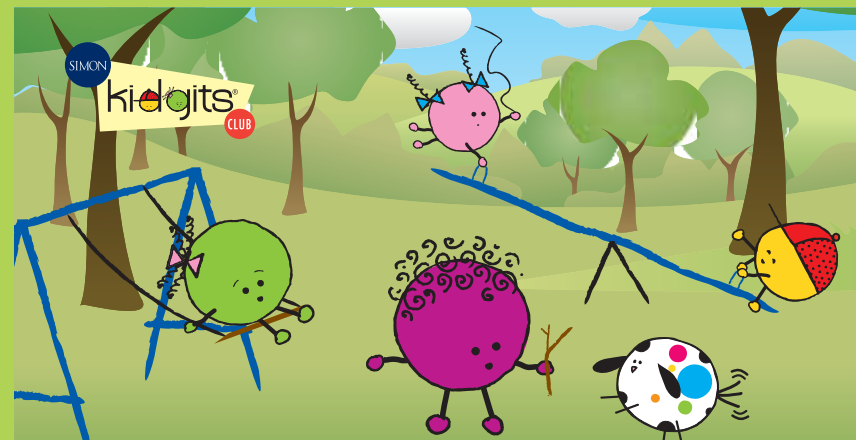
Saturday			
Time	From	To	Performer
12:00	12:45		Harms Way
1:00	3:00		Walter Reeves
3:15	4:00		Bryan Edwards
4:15	5:00		Business Casual
5:15	6:00		Forgive the Liars
6:15	7:00		8 Up with Dixie

Sunday			
Time	From	To	Performer
11:30	12:15		Murzik
12:30	1:15		Hon Hipp - Out of the Rain
1:30	2:15		Jahara Phoenix Dance Company
2:30	3:15		Chuck McDowell ESOEBO
3:30	4:15		Déjà Vu

Throughout the Festival

Saturday			
Time	From	To	Performer
12:00	6:00		Puppeteer Kevin Pittman

Sunday			
Time	From	To	Performer
12:00	5:00		Puppeteer Kevin Pittman



UPCOMING EVENTS

- Dino Day • September 24 • 1:00 - 3:00 p.m. • Mayor's Court
- Kidgits Story Hour • October 4 • 11:30 a.m. • Play Area
- Fall Festival • October 15 • 1:00 - 3:00 p.m. • The Village
- Trick-Or-Treat • October 31 • 6:00 p.m. • Mall Wide

Not a member? It's just \$5 to join! Visit Simon Guest Services for details.

MALL OF GEORGIA I-85 at Exit 115. GA 20 West. Shopping Line® 678-847-5000.

Produced by Feld Entertainment

Disney ON ICE

DARE TO DREAM

Tickets Start at \$14!

OCT. 12 - 16 PHILIPS ARENA

Wed.	Thu.	Fri.	Sat.	Sun.
OCT. 12	OCT. 13	OCT. 14	OCT. 15	OCT. 16
7:30 PM	7:30 PM	10:30 AM	11:00 AM 2:30 PM 6:30 PM	12 NOON 4:00 PM

Buy tickets at www.disneyonice.com, Ticketmaster Retail Locations, Philips Arena Box Office or call 1-800-745-3000

Regular ticket prices: \$14 • \$22 • \$30 \$35 Club • \$50 VIP • \$75 Rinkside
Additional fees may apply.

Duluth Fall Festival Parade

Parade

Kicking off the Festival at 10 a.m. on Saturday morning is the traditional Duluth Fall Festival Parade. Grand Marshal, Stewart Cink will lead the Parade riding in Well's Fargo's horse drawn stagecoach. With an anticipated 100 entries, the Parade celebrates Duluth's sense of

community. A colorful assortment of drill teams, cheerleaders, sports teams, dance troupes, Boy Scouts, Girl Scouts, politicians, first responders and musicians will be traveling the Parade route, tossing candy and waving to spectators. Duluth's two High Schools, Duluth and Peachtree Ridge, will be represented

by their respective marching bands.

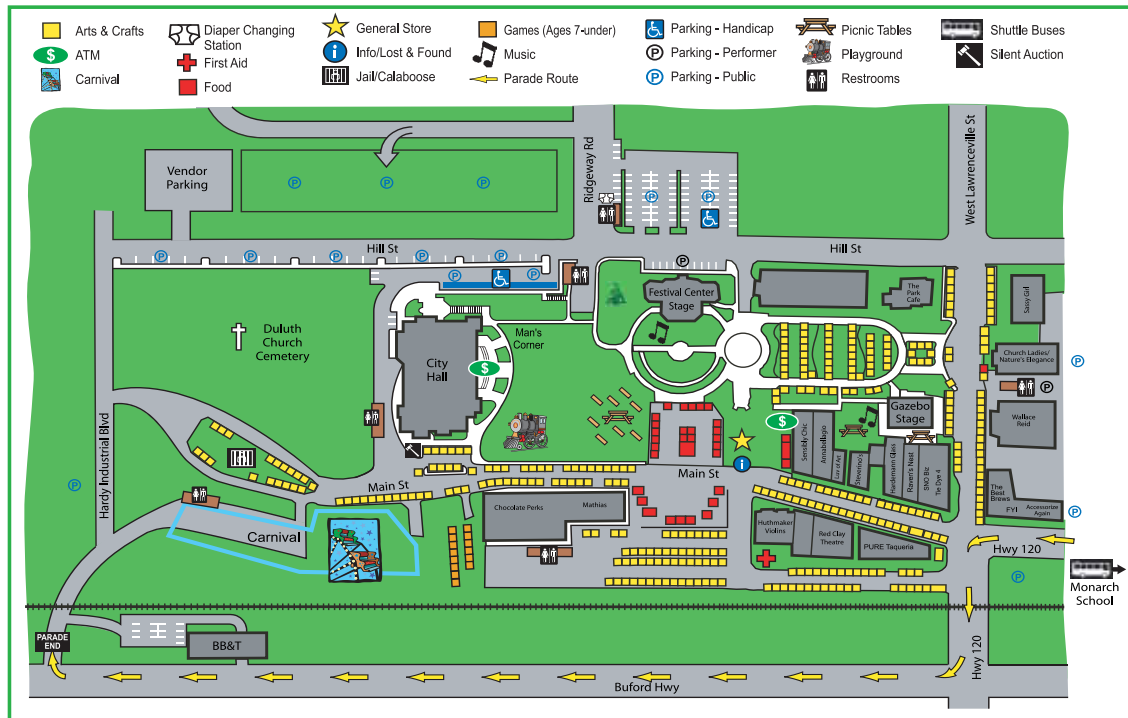
Parade Route:

The Parade starts on Main Street (near the Monarch School), continues south and east to Highway 120, turns south to Buford Highway, and ends at Hardy Industrial Boulevard (see the Duluth Fall Festival map below).

Grand Marshal - Stewart Cink

Duluth is proud to honor one of its citizens as the 2011 Grand Marshal of the Duluth Fall Festival. Stewart Ernest Cink (born May 21, 1973) is a professional golfer on the US PGA Tour. Cink grew up in Alabama and attended Georgia Tech in Atlanta where he played golf for the Yellow Jackets. He turned professional in 1995 and after winning several tournaments

joined the PGA Tour in 1997. Cink performed consistently on the Tour over the next few years and was often in the top 10 of the Official World Golf Rankings, reaching sixth in 2008. He won the British Open in 2009, has played on five US Ryder Cup and four US President's Cup teams. He and wife Lisa have two sons, Connor and Reagan and reside in Duluth.



Affordable Family Fun @ The Georgia Trail

The Georgia Trail and Augusta's chef managed restaurant with full bar is an affordable family friendly option.

Visit the Georgia Trail today! Located just seconds from I-85 South at exit 105. To learn more, visit GaTrail.com or call 770-497-GOLF (4653).



The Georgia Trail
at Sugarloaf
www.gatrail.com

- PGA Pros on Staff
- Lessons/Clinics
- Birthday Parties
- Driving Range
- 9-Hole Course
- Putt-Putt Only \$4Kids/\$6Adults

Save 50% Off next round of Golf or buy One Meal & receive One Meal 50% Off at Augusta's.

Mention Fall Fest/Expires 2/28/12

STEVERINO'S

Pizza, Burgers, Wings, Subs & More!

DOWNTOWN DULUTH

On The Town Green

3117 Main Street • Duluth, GA 30096

770-622-2110

www.steverinosduluth.com



Duluth Wine Beer & Spirits Super Store

supports

Duluth
29th Annual FALL FESTIVAL

DULUTH PACKAGE STORE

2870 Peachtree Industrial Boulevard - Duluth, GA 30096

678.957.0595

www.duluthpackage.com

WORLD CLASS RACING PETIT LE MANS SEPT. 28-OCT. 1



Road Atlanta

Petit Le Mans powered by Mazda will host the 2nd Annual Intercontinental Le Mans Cup featuring Audi, Peugeot, BMW, Porsche, Ferrari, Aston Martin and more! The 10-hour, 1,000 mile race is set for October 1st at Road Atlanta.

Kids 12 and under are FREE when accompanied by a paid adult.

ROADATLANTA.COM



Get Your Tickets Today By Calling 678-866-1477
Or Purchase Online At RoadAtlanta.Com



Duluth
29th Annual FALL FESTIVAL

Duluth Fall Festival '11 COMMITTEE CHAIRS

2011 FESTIVAL CHAIRPERSON

Wayne Herman

2012 FESTIVAL CHAIRPERSON

Kathryn Willis

ANSWERING SERVICE

Wayne Herman

ARTS & CRAFTS

Kathy Mumme

DANNY & DIANE WILLIAMS

BAREFOOT IN THE PARK LIASONS

Nancy Harris

Hildee Issacs

CARE COMMITTEE

Dorothy Rainey

CARNIVAL (WEDNESDAY THRU SUNDAY OF FESTIVAL)

Gold Medal Shows

Wayne Herman

CHRISTMAS PARTY

Janice Polack

CHRISTMAS TREE LIGHTING

Kay Montgomery

Greg Whitlock

CLEANUP

Don Tew

COMMUNITY LUNCH (FRIDAY OF FESTIVAL)

Beth Bell (Food)

Alexis Huntzinger (Decorations)

CONCERT (SATURDAY, TWO WEEKS BEFORE FESTIVAL)

Kay Montgomery

Teresa Lynn

CONCESSION STAND

Crystal Huntzinger

Rich and Donna Daluga

Annette McIntosh

COOKOUT AT WALLY'S PARTY SHACK

Annette McIntosh

Ann Odum

DECORATIONS

Judy McCorkle

Kathy Johnson

Katherine & Bud Knox

EMCEES

Brooks Coleman

Jerry Bignotti

Johnny Phelps

Jeremy Whyte

ENTERTAINMENT

Festival Center Stage:

Michael Hopkins

Gazebo Stage:

Scot Femmer

Michael Robbins

FESTIVAL DIRECTORY

Laura Heck

Emily Heck

Cherie Pritchard

Kathryn Willis

Mike DeVries

FESTIVAL LAYOUT

Ralph Mumme

Danny Williams

FESTIVAL NIGHT OUT

Cherie Pritchard

FIRST AID

Linda Bailey

Lea Bay

FOOD VENDORS

Mell & Gail Robinson

Danielle Maynard

GAMES & RIDES

Ralph Mumme

GENERAL STORE

Sherry Drummond

Rita Howard

Melanie Sheldon

GOLF CARTS

Don & Donna Loudermilk

INFORMATION, BRICKS, LOST & FOUND

Glen Faulkner

MAN'S CORNER

Greg Pritchard

Cherie Pritchard

MILITARY

Kathy Orcutt

Russ Sheldon

NEW YEAR'S EVE

Teresa Lynn

Jayne Madigan

MEMBERSHIP/NAMETAGS

Mike DeVries

OPENING CEREMONY/GRAND MARSHAL

Kay Montgomery

OPERATIONS

Wayne Herman

PARADE

Greg Whitlock

Joyce McIntosh (Convertibles)

Monitors:

Tim Montray

Denise Montray

PARK SET-UP

John Martin

PARKING

Andrew Robinson

PHOTOGRAPHY

Joyce Mell

Kathryn Kelkenberg

POSTERS

Marsha Anderson Bomar

Ann Odum

PUBLICATIONS/TABLOID

Alana Moss

Kathryn Willis

PUBLICITY

Lisa Pugh

Kathryn Willis

REFRESHMENTS

Rita Howard

ROAD RACE

Maxine Garner

Helen Jones

Gary Jenkins (coordinator)

SHUTTLE SERVICE

John Martin

Duluth Merchant's Association SIGN DESIGN AND ORDERING

Gin Willis

SIGN INSTALLATION

Kelly & Kim Kelkenberg

SIGN-UP TOOL (WEB SITE)

Alana Moss

Mike DeVries

SILENT AUCTION

Janet & Sheldon Greenwald

SOUND PRODUCTION

Festival Center Stage:

Earl Griffith

Gazebo Stage:

Michael Robbins

SPONSORSHIP

Cherie Pritchard

Greg Pritchard

Kathy Orcutt (Sponsor Booths)

Diana Potts

Kathryn Willis

T-SHIRTS

Kim Craig

Kathy Orcutt

TASTE OF DULUTH

Annette McIntosh

Annette Summerour

TRAFFIC & SECURITY

Doug Mundrick

TREASURER

John Martin

VENDOR MANAGEMENT

Kathy Fincher (Check-in)

Steve Lynn (Unload/Load)

Krissy Doyle

WEB SITE/FACEBOOK/TWITTER

Susan Dugan

Wayne Herman

WORSHIP SERVICE

Matt Reeves

ZONE COORDINATORS

Jim & Terrie Adkins

Duluth Fall Festival!

The Duluth Fall Festival Committee would like to Thank

The City of Duluth!

These are our working partners, without whose help and cooperation it would be impossible to put on this festival! All of the ones listed below work closely with us to make Duluth a better place to live, work and play!

City of Duluth:
Mayor Nancy Harris

City Council Members
Marsha Anderson Bomar • Jim Dugan
Billy Jones • Doug Mundrick

Greg Whitlock, Mayor Pro Tem

City Administrator, Phil McLemore

Business Office Department, Teresa Lynn City Clerk
Economic Development Manager, Chris McGahee

Events Coordinators, Jayne Madigan & Crystal Huntzinger
Festival Center Manager, Janice Yarbrough
Municipal Court Department, Charles Barrett, Judge
Parks Department, Director Kathy Marelle
Planning & Development Department, Director Glenn Coyne
Police Department, Chief Randy Belcher
Public Information & Marketing Director, Alisa Williams
Public Works Department, Director Audrey Turner

Plus the entire staff of the City of Duluth!

Participants at the Taste of Duluth

On September 15th at the Payne-Corley House, the Duluth Fall Festival honored sponsors and special guests at the annual Taste of Duluth. Guests sampled menu items and beverages from several local restaurants retailers.

Hosts: Annette McIntosh, Annette Summerour

Musical Entertainment: The Blarney Girls

Restaurants

Chocolate Perks
Costco Wholesale
Dave and Buster's
Duluth Rexall Grill
Family Restaurant
Kurt's Bistro
Park Café

Payne-Corley House

Pure Taqueria
Steve's
Stoney River
The Patio

Eagle Rock

Distributors (Budweiser)
Sweetwater Package
World Beverage

Floral Arrangements

Nature's Elegance —
Connie Holmes

Beverage Retailers

Duluth Fine Wine

Eastern Continental Divide Monument Installed

Each year, the Duluth Fall Festival committee tries to add something meaningful to Downtown Duluth. This year, the Festival installed a monument to mark the location where the Eastern Continental Divide goes through the Duluth Town Green. The 10 ft. monument is constructed of Georgia granite and was developed in cooperation with the Duluth Downtown Development Authority (DDA) and was designed by DDA member, Rob Ponder. **Unveiling Date:** Thursday, September 22nd at 6. p.m. Please come!

ROAD RACE

Did you eat too many hot dogs and funnel cakes or drink too many smoothies at the Festival? Come run or walk off those calories at the Duluth Fall Festival 5K.

Warm up starts Sunday morning with Sugarloaf Jazzercise at 7:40 a.m. At 8:00 a.m., get ready, set to run/walk through historic downtown Duluth. After you cross the finish line behind the Festival Center, we will be waiting for you with complimentary refreshments.

Just for participating, you will get a colorful long-sleeved T-shirt. First place awards are presented to men and women competing in 15 different age groups from age 10 and under through ages 75 and over.

To register online for the Road Race, visit www.duluthfallfestival.org.

Proceeds from the Road Race benefit the Duluth Historical Society and the Historic Strickland House.

Registration fees:

By 9/16/11 - \$20.00 per person \$70.00 per family of four (\$15.00 each additional child).

After 9/16/10- \$25.00 per person.



Sushi Yuki



GRAND OPENING SPECIAL

Buy One.. Get One .. Half Off

Lunchtime Only! 11:00 am - 2:30 pm

With this coupon!

Dinner: 50% off on
Rolls & Sushi

From 4:30 pm to 7:30 pm

Lunch Sushi Buffet

\$9.99
7 days

2400 Satellite Blvd.
Suite 106, Duluth, GA

770.814.9663



SPECIAL THANKS FROM THE Duluth Fall Festival!

The Duluth Fall Festival Committee would like to thank the many individuals, companies, schools, churches, and civic organizations, for their support of the Duluth Fall Festival. We especially recognize the following who have contributed so much in many different ways.

Our Top Level Sponsors:
 Gwinnett Community Bank – Tom & John Martin
 AGCO – World Corporate Headquarters, Duluth
 Lou Sobh – Gwinnett Place
 SCANA Energy - Simone McKinney
 Gwinnett Medical Center – Duluth
 Russ & Melanie Sheldon

American Family Insurance
 Fairway Car Wash - Sam Eskenazi
 Suzanna's Kitchen - Barbara Howard
 Wells Fargo
Our Media Partners:
 Gwinnett Daily Post – Joy Adams
 Solutions Marketing, LLC
 104.7 The Fish - Chad Davis
 News/Talk 750 WSB - Pat Tedeschi
 WGKA AM 920 - Joel Foster
Community Involvement:
 Affiliated Graphics – Mike Bressler
 All Event Rentals – Dana White
 Andersen, Tate, & Carr, P.C. – Matt Reeves
 Brooks Coleman "The Voice of the Festival"
 Chocolate Perks - Marsha Anderson Bomar
 Corporate Expressions - Andy & Carolyn Kite

Clearbuilt Technologies, Kerry Wolfe - Website
 Duluth Fine Wines - Bernard & Sharon Robertson
 Duluth Merchant's Association
 Georgia Power Company
 Gwinnett Community Bank and Employees
 Mathias Corporation – Dave Heydinger
 McClellan, Rowland, Allen & Co., LLC
 Payne-Corley House – Krista & Mike Ganley
 Supporting restaurants for Taste of Duluth
 Rock, Paper, Scissors – Randy & Cindy Sutt
 All Festival Newspaper Advertisers
 All Entertainers & Parade Participants
 All Donors to the Silent and Live Auctions
 Our 350 Arts & Crafts & Food Vendors
 2011 Chairperson – Wayne Herman
 2012 Chairperson – Kathryn Parsons Willis
 AND...our 400 community volunteers!



Visit the Gwinnett Daily Post Booth at the Duluth Fall Festival and Enter to Win these Great Prizes!



WIN A FAMILY FOUR PACK OF TICKETS!
OCTOBER PHILIPS 12-16
 ARENA
disneyonice.com



WIN A PAIR OF TICKETS!
 Saturday, Nov. 12th
 For tickets go to ticketmaster.com
The Arena
 at Gwinnett Center

DIRECT FROM BROADWAY



Rain
 A TRIBUTE TO THE BEATLES

GAS SOUTH BROADWAY SERIES
WIN FOUR TICKETS!
OCTOBER 28-30 COBB ENERGY PERFORMING ARTS CENTRE

"THE BEATLES ARE BACK!" - Variety

WIN A PAIR OF TICKETS!
NOV. 2-6
 Fox Theatre



MAMMA MIA!
 THE SMASH HIT MUSICAL
 BROADWAYINATLANTA.COM



MODERN. SOUTHERN. STYLE.

WIN A \$200 GIFT BASKET!



Compliments of BELK Mall of Georgia



Duluth 29th Annual Fall Festival

Saturday and Sunday
September 24th & 25th, 2011
Free Admission!

As a member of this community, it gives us great pleasure to once again support this event as its Entertainment Sponsor. For 29 years Gwinnett Community Bank has watched the Duluth Fall Festival grow into one of the largest & most successful annual events of its kind. Community is so important to us that we proudly made it a part of our name. Come be a part of the celebration that honors the truly important things in life ... your family, your friends and your hometown.



The Duluth Fall Festival Committee would like to thank GWINNETT COMMUNITY BANK for always sponsoring our schedule page and for being OUR TOP SPONSOR IN 2011.

SCHEDULE of Events

Wednesday through Friday
6:00-10:00 PM
Gold Medal Shows Carnival

Saturday Sept. 24th

Booths Open	9:00
Festival Parade	10:00
(roads closed; shuttle service suspended)	
Opening Ceremony	11:30
Music & Entertainment Begins	12:30
(2 stages)	
Festival Closes	7:00

Sunday Sept. 25th

Road Race Warmup	7:40
5K Road Race	8:00
Booths Open	9:00
Worship on the Green	10:00
Music & Entertainment Begins	12:00
(2 stages)	
Decorations Auction	3:00
(General Store)	
Festival Ends	5:00

For More Information:
www.duluthfallfestival.org