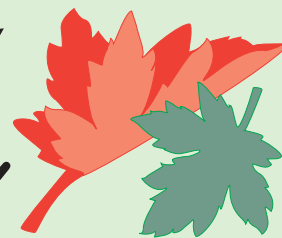




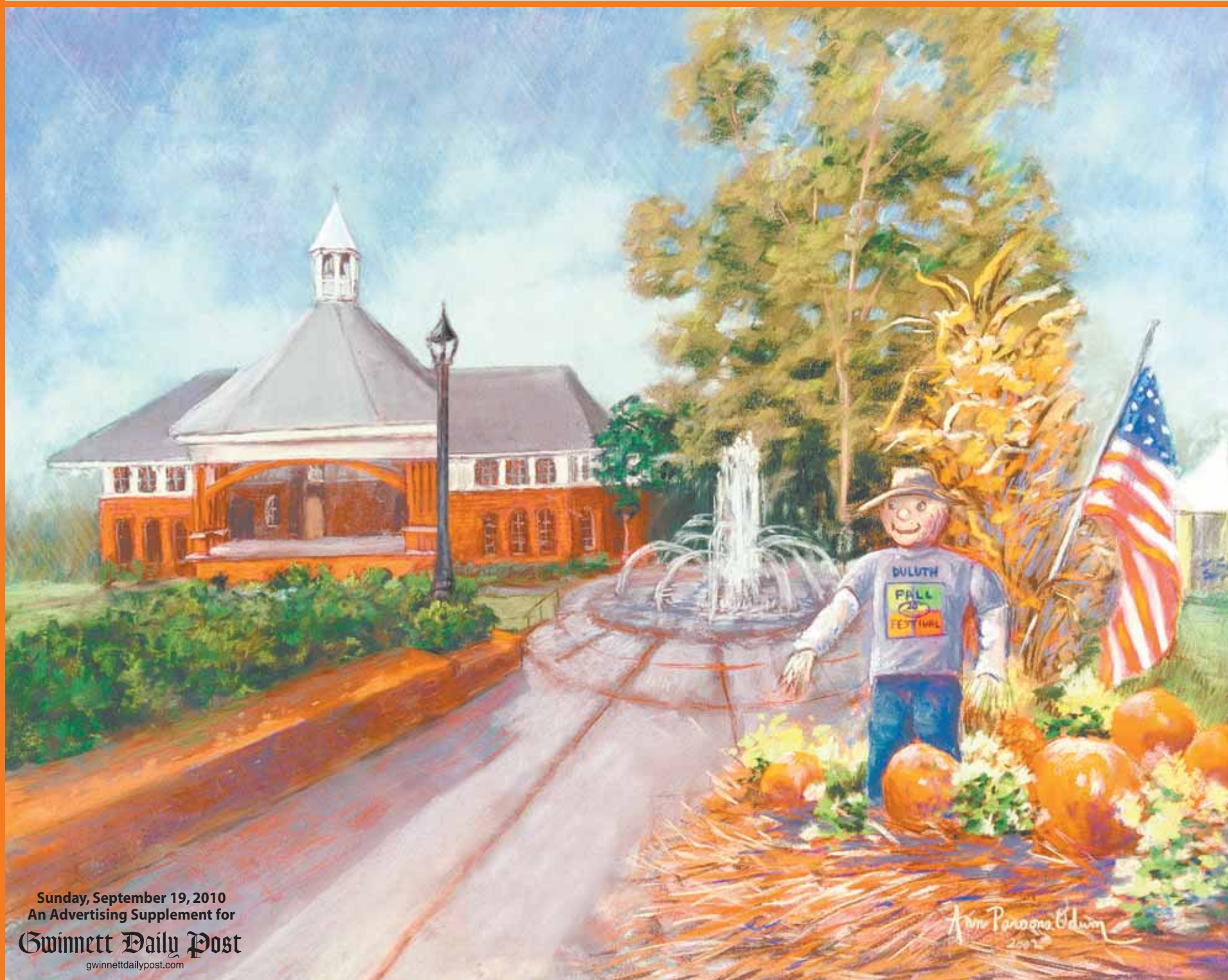
2010

Duluth

28th Annual FALL FESTIVAL



Historic Downtown Duluth • Rain or Shine • Free Admission • Complimentary Shuttle • www.DuluthFallFestival.org • Saturday, Sept. 25th • Sunday, Sept. 26th



Sunday, September 19, 2010
An Advertising Supplement for
Gwinnett Daily Post
gwinnettdaily.com

Ann Parsons Olson
2010

2010 Duluth Fall Festival Sponsors

WE GRATEFULLY ACKNOWLEDGE THEIR HELP AND SUPPORT.

KEYSTONE SPONSOR

Gwinnett Community Bank

CORNERSTONE SPONSORS

104.7 The Fish
AGCO Corporation
Gwinnett Daily Post

MAJOR SPONSORS

ENTERTAINMENT & SHUTTLE SPONSOR

Gwinnett Community Bank

FESTIVAL DECORATIONS SPONSOR

Carnett's Duluth Carwash

FESTIVAL CONCERT SPONSOR

Gwinnett Community Bank

ARTS & CRAFTS SPONSOR

Gwinnett Daily Post

FESTIVAL GENERAL STORE SPONSOR

Lou Sobh Pontiac - Buick - GMC

FOOD COURT SPONSOR

SCANA Energy

COMMUNITY LUNCH SPONSOR

Suzanna's Kitchen - Barbara Howard

TASTE OF DULUTH

Payne-Corley House

MILITARY SPONSOR

Hugs for Our Soldiers

PLATINUM SPONSORS

Barkhill Sound - Earl Griffith
Brooks Coleman, State Representative
David Shafer, State Senator
Gwinnett Medical Center - Duluth
J.O. King, Inc - Russ Sheldon
Mathias Corporation - Dave Heydinger
News/Talk 750 WSB
Parsons - Cumming & Alpharetta
Thomas Kinkade Gallery - Cumming
Solutions Marketing

EMERALD SPONSORS

920am WGKA Intelligent Talk
Hennessy Jaguar Gwinnett
Howard Brothers Hardware
Signs by Tomorrow
Verizon Wireless

DIAMOND SPONSORS

AAA Norcross World Travel
Allcare Urgent Care
American Family Insurance
Andersen, Tate, & Carr, P.C.

Associated Estates Realty

Bass Pro Shops

BB&T - Duluth

Bill Vanderford's Guide Service

Chocolate Perks

Clearbuilt Technologies

Costco Wholesale

Dave & Buster's Gwinnett

Delta Community Credit Union

Dixie HomeCrafters

Duluth Animal Hospital

Duluth Fine Wine & Spirits

Empower Processing

First Investors Corporation

Flagstar Bank

Geico Insurance - The Somers Agency

Georgia Green Energy Barrier

Gwinnett Braves

Gwinnett Gladiators Hockey

Heck Design Group

Homestead Hospice Hope Foundation

Illuminating Design

Kiwanis Club of Duluth

LeafGuard of North Georgia

Maloo Family Chiropractic

McClellan, Rowland, Allen & Co., LLC

Niche Bags by Melanie

Noble Village at Sugarloaf

Posh Patios

Printing Trade Company - Mark Williams

Publix at Duluth Station

Quantum National Bank

Rainbow Village

Right to Hike

Rock, Paper, Scissors

Taylor Construction Co.

The Duluth Montessori School

Thompson & Sweeny, PC

Ultimate Gymnastics

Vacation Village Resorts

WATC TV 57

Worldly Concepts DBA Direct Satellite TV

GOLD SPONSORS

Affiliated Graphics / Accent Mail

All Event Rentals

Atlanta Flooring Design Centers

Larry & Lea Bay

Corporate Expressions

Dennis Taylor and Co.

John A. Monk, C.P.A., P.C.

Kroger - Peachtree Hill

Peachtree Christian Hospice

The Border Collies

Wilson Lewis CPA

Woody's Nursery

SILVER SPONSORS

American Legion Post #251

Big Jim's Landscape

Bill Head Funeral Homes & Crematory

Duluth Merchants Association

Edward Jones - Dave Cook

Flex HR

Georgia Power Company

Harold Stamey, CPA, PC

Imagescapes

Miss Cindy's Dance Studio

Plantation South Assisted Living

Slade Lail, DDS

Sonic Drive In

Steverino's

Tapp Lumber Company

Taylor's Collision / Express Towing

The Georgia Trail

The McCart Group

Touchmark National Bank

Wallace Reid Portraiture

Westbrook, McGrath, Bridges, Orth & Bray

Wolfgang Auto Repair

FRIENDS OF THE FESTIVAL

Jim & Terrie Adkins

Scot Femmer & Alana Moss

Ronnie & Vicki Frost

Sheldon & Janet Greenwald

Jennifer Gregg

Charles & Rosemary Hall

Jim & Julie Hall

Mayor Nancy Harris

Amalie Helbert

Eric & Marian Holmes

Jim and Jane Johnson

Kelly & Kimberly Kelkenberg

Tim & Denise Montroy

Mary K Murphy

Jim & Kathy Orcutt

Greg & Cherie Pritchard

Fred & Dorothy Rainey

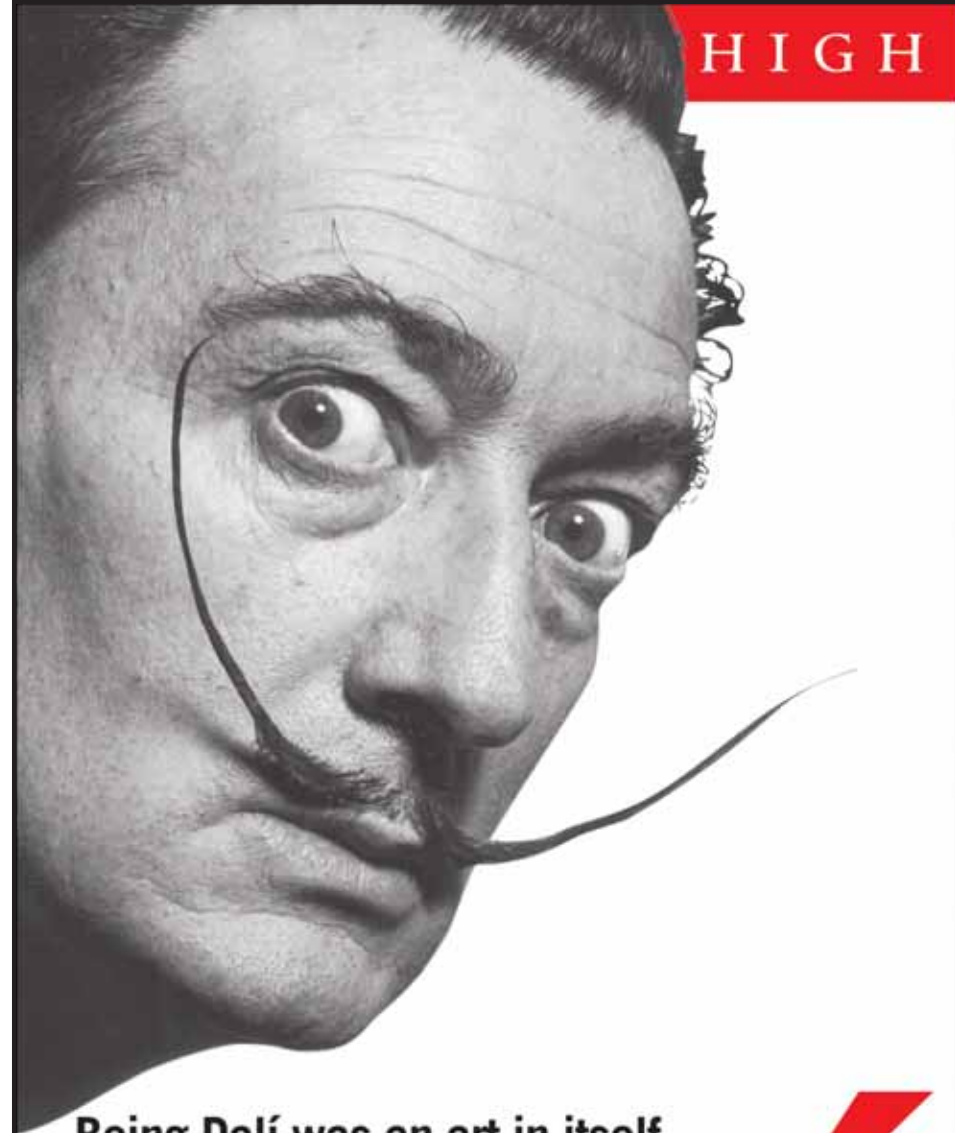
Russ & Melanie Sheldon

Lucile Walker

Ray & Rayann Walker

Kathryn Parsons Willis

HIGH



Being Dalí was an art in itself.

DALÍ

For tickets visit HIGH.org, 404-733-HIGH, or ticketmaster

Discounts for groups of ten or more. Call 404-733-4550.

This exhibition is organized by the High Museum of Art in collaboration with the Salvador Dalí Museum, St. Petersburg, Florida, and the Fundació Gala-Salvador Dalí, Figueras, Spain. Exhibition support provided by Art Partners, The Atlanta Foundation, The Fay and Bennett Howell Exhibition Fund, The Forward Arts Foundation Exhibition Endowment and indemnity from the Federal Council on the Arts and the Humanities. Image: Philippe Halsman (American, born Latvia, 1906-1979); Dalí's Mustache, 1953. © Philippe Halsman Archive. Salvador Dalí's Right of Publicity Reserved by Fundació Gala-Salvador Dalí, Figueras, 2010.

DELTA
OFFICIAL AIRLINE

HIGH MUSEUM OF ART ATLANTA » 1280 PEACHTREE ST., N.E. » MEMBERS ALWAYS FREE



Welcome to the 2010 Duluth Fall Festival

**Gin Willis,
Chairperson**

2010 Duluth Fall Festival

Welcome to our 28th Annual Duluth Fall Festival! We are expecting the biggest and best Festival ever. New this year is a full carnival opening on Wednesday, September 22nd and running through Sunday of the Festival. The carnival will be located on Main Street across from Duluth City Hall. Everyone can enjoy amusement park rides and games.

Saturday, the Festival opens at 9:00 a.m. The parade begins at 10:00 a.m., led by Grand Marshal Brooks Coleman. We are extremely honored to have State Representative Coleman lead the Parade, as he is a long-time volunteer with the Festival. There will be drill teams, cheerleaders, sports teams, dance troupes, scout groups, antique cars, clowns, musicians and much more.

Following the parade, join us for the Opening Ceremony at the Duluth Festival Center in the heart of the Festival grounds. Mr. Coleman, will be honored, as well as our Mayor, City Council, soldiers from Fort Benning and our generous sponsors.

Sunday starts earlier, at 8 a.m., with a 5K Road Race, followed by an outdoor worship service at the Duluth Festival Center. Entertainment and fun will run until 5:00 p.m.

The Festival, itself, features almost 400 vendors from throughout the southeast featuring hand made, original fine arts and crafts such as jewelry, paintings, hand carved clocks, purses, clothing, baskets, candles, pottery, floral arrangements, quilts, furniture, wooden toys, gourmet food and

much, much more. For the first time, we will have hand-blown glass being created onsite.

Also new this year is "Man's Corner" that will host several activities and products geared towards the men who tag along to please their significant others. At Man's Corner you will find a putting green, a professional fishing guide, cars, tractors, lawn mowers, and so on. Don't worry about missing that important football game, as there will be flat-screen TVs so that you can tune in.

As always, we have a variety of entertainment, including music, dancing, singing and acrobatics running continuously on three separate stages. We hope you plan on spending the whole weekend with us. You won't want to miss it!

Beautification of Duluth
The proceeds from the Festival are used towards the beautification and improvement of historic downtown Duluth. Money generated from the Festival has been used for numerous special projects, including purchasing and developing Taylor Park (including the arched entryway), bricking the Festival Center Courtyard, increasing the size of the public restrooms, purchasing planters, landscaping the streets of Duluth, lighting the historic area, and many others.

By far, the largest Festival undertaking was building the Duluth Festival Center Amphitheatre on the Town Green. The Duluth Festival Center has spurred complementary development by the City, such as the fountain, the

brick walkways and curving walls on the Town Green, lantern posts, landscaping, the children's playground, and, most notably, a new City Hall.

Community Fellowship

Although the annual Festival is the organization's biggest claim to fame, developing relationships and fellowship is another important undertaking. In a world where many people don't know their own neighbor and seek community roots, we are proud to offer an opportunity for people to develop life-long friendships and make community connections to gain a feeling of being a part of something bigger than ourselves.

To promote these budding friendships, the Festival sponsors many Duluth-based events during the year, including: monthly meetings, downtown work days, an annual community luncheon (for sponsors, volunteers, city workers, and first responders), the Sizzlin' Summer Picnic (an old-fashioned potluck dinner), the Taste of Duluth, the Duluth Christmas Tree Lighting (followed by a special Christmas party for Duluth Fall Festival volunteers), and, the Duluth New Year's Eve celebration.

In addition, the Festival concert is held Saturday night two weeks before the Festival. Having the Concert before the Festival enables us to promote the upcoming Festival, have more room for concert-goers, and invite bigger-name bands. This year, Rupert's Orchestra, famous throughout

the southeast performed, along with opening act, Kozmic Mama.

History of the Festival

The Duluth Fall Festival is celebrating its 28th anniversary this year. However, the real beginning dates back almost fifty years to 1962 and a five-week celebration of the history of the town. Then, in 1976, a spring festival was held to celebrate the centennial of Duluth's charter. These two festivals were the forerunners of today's Duluth Fall Festival. In late October 1983, the first annual Duluth Fall Festival was organized by a handful of citizens (a few of whom are still involved with the Festival today). The weather was cold and rainy and profits were small; however, the enthusiasm persisted, and the decision was made to hold it annually. In 1984, the Festival date was changed in 1984 to the last weekend in September, in hopes of better weather.

Many other additions to the Festival occurred that year: the first Festival tabloid was published that year by the Gwinnett Daily News, he number of committees doubled from three to six, the first entertainment stage was built, and the first Road Race was held.

Through the years, the Festival has continued to grow and change. In 1985, the first official T-shirts were donated by Tom Martin of Citizen's Bank. By 1987, the number of committees had grown to 19 (including the so-necessary Cleanup committee). The first "Miss Duluth" pageant was held that year, and a picnic area was designated. 1988 brought the first Silent Auction, along with the threat of Hurricane Hugo. In 1993, a concert replaced the traditional Street Dance. By 1996, the number of committees had grown to 36, and the number of booths to about 250. It was a banner year in other ways, too, with the purchase of Taylor Park and the addition of the all-important Sponsor program.

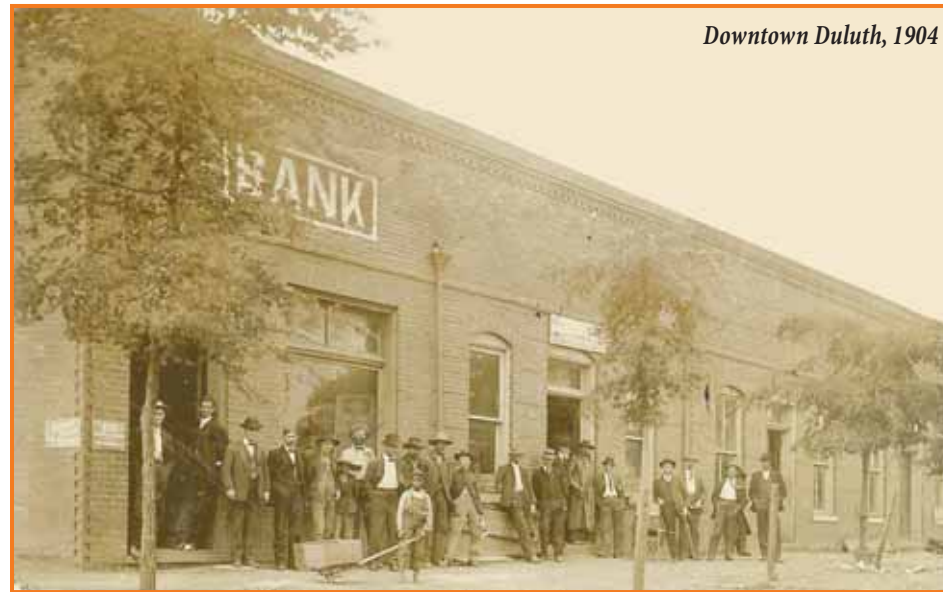
Unfortunately, though 1996 was almost a total rainout. For that reason, in 1997, the Festival was changed to a two-day event, to salvage at least one day in case of rain. Coincidentally, that is exactly what happened that year.

Now, twenty-seven years after the first annual event, the Duluth Fall Festival is one of the most successful festivals in the southeast. Since 1983, the size of the Festival has grown immensely. The number of separate committees has gone from 3 to 45, the number of volunteers has grown from 25 to more than 300, the number of Arts & Crafts and Food booths number almost 400, and the crowds have increased, too.

If you are interested in volunteering with the Festival, we would love to have you.

For information, send an e-mail message to dffMembership@gmail.com, visit our Web site at www.duluthfallfestival.org, or see any volunteer.
Kathryn Parsons Willis

Downtown Duluth, 1904



Duluth Fall Festival Parade & Opening Ceremony

Kicking off the Festival at 10 a.m. on Saturday morning is the traditional Duluth Fall Festival Parade. With an anticipated 100 groups, the Parade celebrates Duluth's sense of community. A colorful assortment of drill teams, cheerleaders, sports teams, dance troupes, Boy Scouts, Girl Scouts, politicians, first responders and musicians will

be traveling the Parade route and waving to spectators. Duluth's two High Schools, Duluth and Peachtree Ridge, will be represented by their respective marching bands.

Grand Marshal of the 2010 Parade is long-time Duluth resident and State Representative Brooks Coleman. The official, "Voice of the Duluth Wildcats," Mr. Coleman is a motivational

speaker and retired educator who served as assistant superintendent of Gwinnett County Schools, director of curriculum development, administrative assistant to the superintendent, principal of two elementary schools and one primary school, teacher and coach. He

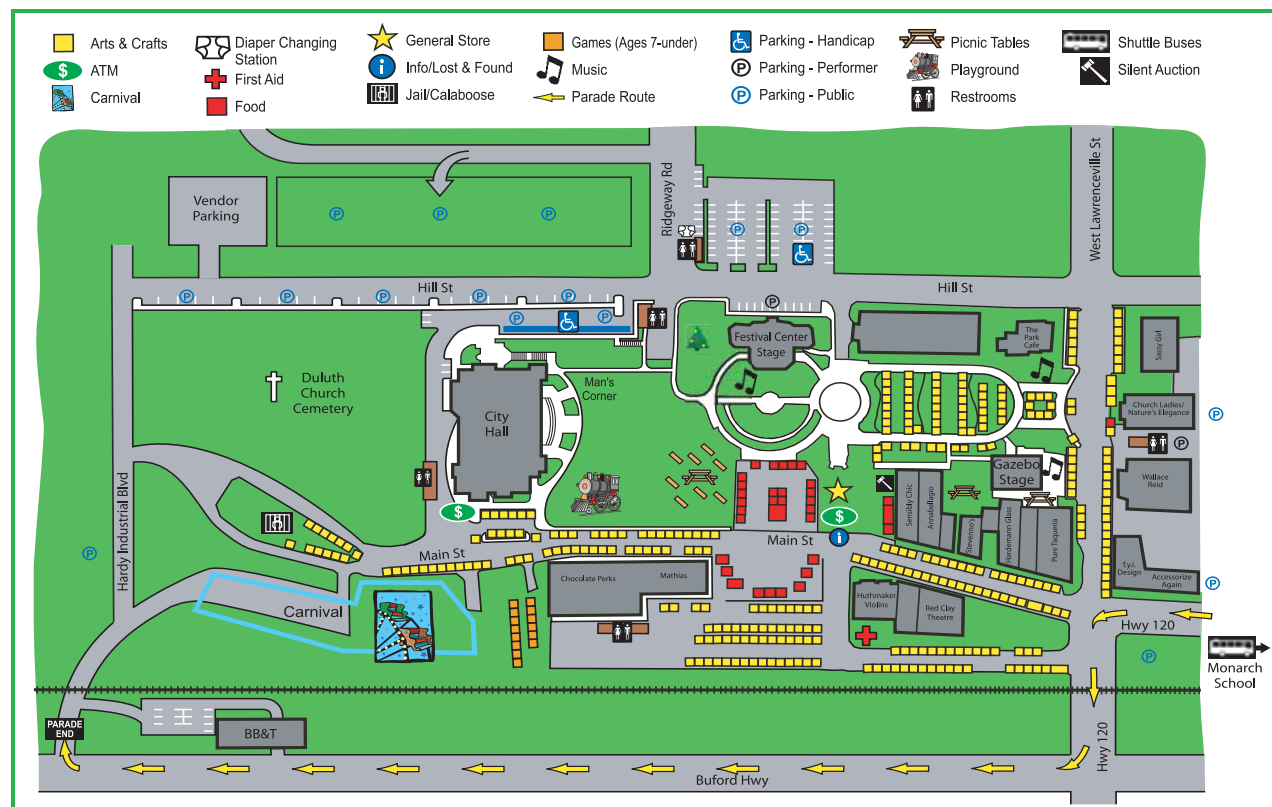
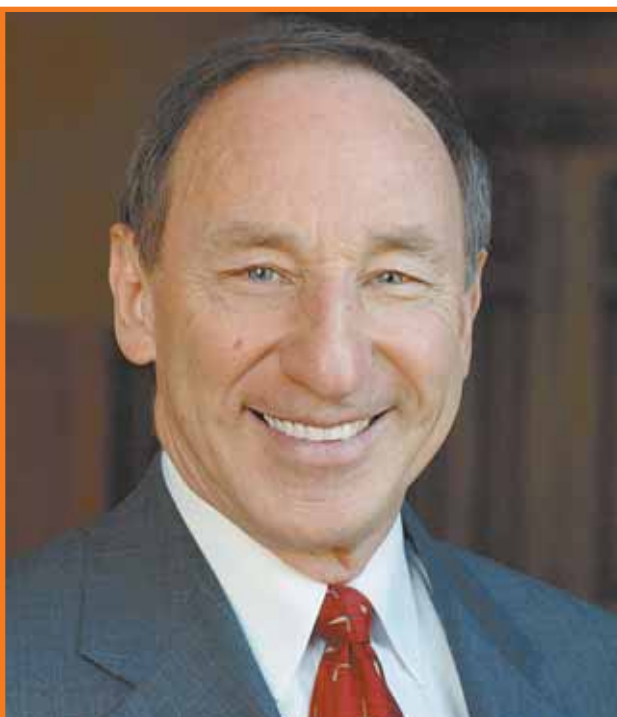
was selected as the Georgia State Legislator of the Year by the Professional Association of Georgia Educators.

Immediately after the Parade, join us at the Festival Center Amphitheatre to honor local dignitaries in the Opening Ceremony. The Parade

Grand Marshal will be featured, as well as soldiers from Fort Benning. The Opening Ceremony is also the Festival's opportunity to acknowledge our generous sponsors, without whom, the Festival and its many improvement projects would not be possible.

Parade Route

The Parade starts on Main Street (near the Monarch School), continues south and east to Highway 120, turns south Buford Highway, and ends at Hardy Industrial Boulevard (see the Duluth Fall Festival map, below).



AAA NORCROSS WORLD TRAVEL
Travel FOR ALL YOUR VACATION PLANNING NEEDS

- Cruises & All Inclusive Vacations
- Disney Vacations
- Member and Non-Members Welcome

5450 PEACHTREE PKWY. • NORCROSS 30092 • 770-448-7024

Come Visit AAA Norcross World Travel at the 28th Annual Duluth Fall Festival

Powerful Tools for Caregivers

You're invited to a FREE 6-week educational series for family caregivers of older adults, presented by Gwinnett County Community Services at Plantation South Duluth. **RSVP now!** Sept. 15, 22, 29, Oct. 6, 13, 20, from 7-9 pm.

Plantation South
Assisted Living Residence

3450 Duluth Park Lane
Duluth, GA 30096
(770) 884-4648
PlantationSouth-Duluth.com

PARKING & SHUTTLE –

Limited parking is available in the general Festival area and in historic downtown Duluth (see the Duluth Fall Festival map, page 12). Handicapped-accessible parking is located in the City Hall (entrance on Hill Street) However, to avoid stress, the Fall Festival committee encourages you to park at one of the following designated lots, and take the complimentary shuttle. See page 8 for map of parking and shuttle locations.

Shuttle Information

Shuttle	Parking Lot	Festival Stop
Blue	Glancy Outpatient Building 3855 Pleasant Hill Road	Monarch School 3057 Main St.
Green	Chattahoochee Elementary School 2930 Albion Farm Rd. Gwinnett Community Bank 2775 Buford Hwy.	
Yellow	Mason Elementary School 3030 Bunten Rd.	

Hours (shuttles run every 15 minutes)

Day	From	To
Saturday	8:00 A.M.*	7:00 P.M.
	*Important: From 9:45 A.M. to 11:15 A.M., shuttle service is suspended for the parade.	
Sunday	10:00 A.M.	6:00 P.M.



D. GELLER
SON
Atlanta's Diamond Superstore Since 1939



1 Cttw Diamond
Earrings from
\$799!

1/2 Cttw Diamond
Earrings from
\$299!



Bring in this ad to receive

**35%
OFF**

**YOUR ENTIRE JEWELRY
PURCHASE OF
REGULARLY-PRICED
MERCHANDISE!**

This coupon is redeemable at any of our three locations. Not applicable towards past sales or layaways. Some restrictions apply. See store for details. Offer good through 10/31/2010.

SMYRNA
CUMBERLAND SQUARE NORTH
Across from Best Buy
2453 Cobb Parkway
Smyrna, GA 30080
770.955.5995

KENNESAW
COBB PLACE
Behind Bugaboo Creek Steakhouse
840 Ernest Barrett Pkwy., Suite 520
Kennesaw, GA 30144
678.331.3100

GWINNETT
MALL CORNERS
Next to HH Gregg
2131 Pleasant Hill Road, Suite 122
Duluth, GA 30096
678.474.4747

Mon - Fri
10am - 8pm
Saturday 10am - 5pm
Sunday 12pm - 5pm



Coming back to Duluth

by Bill Vanderford

Despite being inducted into the National Freshwater Hall of Fame as a Legendary Fishing Guide, traveling the globe while winning hundreds of awards for both my writing and photography, and winning a racing championship in sports cars, I have missed the personal contact with the local community. Thanks to an exciting series of events and the addition of the all new "Man's Corner" for those of us who live an active lifestyle, I'm back at the Duluth Fall Festival this year to meet and greet both newcomers and those in the Duluth community who have been to my fishing classes, fished with me, or who have followed my writing in newspapers and magazines over the years. I'll be available to answer questions, and selling books, Swirlybird Lures, fishing jewelry, and prints of some of my award-winning photos. It will certainly be an exciting reunion for all of us!

Contact Mr. Vanderford at
770-962-1241 or at his web site:
www.fishinglanier.com



\$25
SAVINGS

Simple sign-up. Easy service. Great rates.

With SCANA Energy, natural gas service is a snap.

We make it easy for you to save on your natural gas.

Sign up now and get \$25 in bill credits and more importantly, peace of mind.

Visit SCANAENERGY.COM/GEORGIA1 or call 1-877-722-6244 and save \$25 with promo code GEORGIA1.



Limited time offer for new residential customers. Subject to credit approval. Cannot be combined with any other offer. Savings based on credit of \$5 per bill for the first five bills. Terms and conditions apply. Visit scanaenergy.com/georgia1 for details.

Produced by Feld Entertainment



Disney ON ICE
Disney · PIXAR
TOY STORY 3

The Magic begins at \$6!+

OCT. 13 - 17 PHILIPS ARENA

Thu. OCT. 14	Fri. OCT. 15
7:30 PM+	10:30 AM+
7:30 PM*	7:30 PM*

Sat. OCT. 16	Sun. OCT. 17
11:00 AM*	12 NOON*
2:30 PM*	4:00 PM*
6:30 PM*	

***SAVE \$4:**
\$10 - \$18 - \$26 - \$31
+SAVE \$8:
\$6 - \$14 - \$22 - \$27
*(Excludes Rinkside and VIP seats. No double discounts.)

Regular Ticket Prices:
\$14 - \$22 - \$30 - \$35 Club Seats
\$50 VIP - \$75 Rinkside
(Service charges, facility and handling fees may apply.)

3 WAYS TO REDEEM:
1. Online at Ticketmaster.com and use savings code **BUZZ4**
2. Call **1-800-745-3000** and mention code **BUZZ4**
3. Visit a [ticketmaster](http://ticketmaster.com) Retail Location and mention code **BUZZ4**

For special group savings on tickets, call 770-578-5125
www.disneyonice.com

Duluth FALL FESTIVAL

28th Annual

Duluth Fall Festival '10 COMMITTEE CHAIRS

2010 Chairperson

2010 Vice-Chairperson (2011 Chairperson)
President Duluth Fall Festival, Inc.

Secretary
Treasurer
Arts & Crafts

Carnival

Christmas Party

Christmas Tree Lighting

Clean-Up

Communications (answering Service and e-mail)

Community Lunch

Concert

Decorations

Emcees

Entertainment – Festival Center Stage

Entertainment – Gazebo Stage

Festival Concession Stand

Festival Layout

Festival Night Out

First Aid

Food Vendors

Games & Rides

General Store

Golf Carts

Greetings

Information, Lost & Found

Name Tags

New Year's Eve

Newspaper Inserts

Gin Willis

Wayne Herman

Kathryn Willis

Alana Moss

John Martin

Kathy Mumme

Danny Williams

Diane Williams

Wayne Herman

Mike DeVries

Alana Moss

Kay Montgomery

Greg Whitlock

Don Tew

Janice Pollack

Rayann Walker

Rita Westbrook

Crystal Huntzinger

Alexis Huntzinger

Kay Montgomery

Teresa Lynn

Kathy Johnson

Judy McCorkle

Jerry Bignotti

Brooks Coleman

Johnny Phelps

Jeremy Whyte

Michael Hopkins

Scot Femmer

Michael Robbins

Crystal Huntzinger

Rich Daluga

Donna Daluga

Ralph Mumme

Danny Williams

Cathy Gresenz

Cherie Pritchard

Linda Bailey

Lea Bay

Jennifer Wood

Eileen Maynard

Ralph Mumme

Jennifer Gregg

Kathy Orcutt

Dorothy Rainey

Glen Faulkner

Danny Williams

Teresa Lynn

Alana Moss

Kathryn Willis

Opening Ceremony

Operations

Parade

Park Set-Up

Parking

Photography

Posters

Public Map

Publicity

Refreshments

Road Race

Shuttle Service

Sign Installation

Silent Auction

Sizzlin' Summer Party

Sound Production – Festival Center Stage

Sound Production – Gazebo Center Stage

Sponsor Booths

Sponsorship

T-Shirts

Taste of Duluth

Traffic/Security

Treasurer

Vendor Management

Volunteer Coordinator

Web Site and Facebook

Worship Service

Zone Coordinators

Kay Montgomery

Nancy Harris

Wayne Herman

Greg Whitlock

John Martin

Mell Robinson

Joyce Mell

Marsha Bomar

Ann Odum

David Thrift

Lisa Pugh

Krissy Doyle

Maxine Garner

Helen Jones

Gary Jenkins

Lisa Pugh

John Martin

John Monk

Kelly Kelkenberg

Kim Kelkenberg

Janet Greenwald

Sheldon Greenwald

Annette McIntosh

Earl Griffith

Michael Robbins

Kathy Orcutt

Cherie Pritchard

Diana Potts

Greg Pritchard

Kathryn Willis

Kim Craig

Kathy Orcutt

Annette McIntosh

Annette Summerour

Rita Howard

Randy Belcher

Doug Mundrick

John Martin

Kathy Fincher

Krissy Doyle

Steve Lynn

Mike DeVries

Wayne Herman

Gin Willis

Matt Reeves

Jim & Terrie Adkins



FALL FESTIVAL
Sunday, October 31st • 1:00pm - 4:00pm • The Village

Mall-wide trick-or-treating will follow from 4:00 to 6:00 pm.
Activities include costume contests, balloon animals, crazy hair, the bounce house, Tae Kwon Do demonstrations, and more!

Not a member? It's just \$5 to join. Visit Simon Guest Services for more information.

SIMON **kids' club** **more choices®**
MALL OF GEORGIA
I-85 at Exit 115 • GA 20 West • Buford, GA Shopping Line® 678-482-8788

Festival Welcomes Soldiers Home from Iraq

Join us as we "Welcome Home" Fort Benning's 1st Battalion, 15th Infantry Regiment "CAN DO" soldiers who are just returning from their fourth deployment to Iraq. On Sat. at 10 a.m., Rear Detachment Commander, CPT Andrew Lerch, will lead the 1-15 troops through the streets of downtown Duluth. Come early to get your spot. Watch for our Festival volunteers to hand out flags along the parade route. Wave them high and cheer these soldiers as they pass you by.

Be sure to attend the Opening Ceremony at 11:30 where the 1-15 troops will be recognized for their service to our country. Witness the surprise of a soldier

meeting his adoptive family face-to-face for the first time! Afterwards, stop by the Hugs for Our Soldiers' booth on the Town Green to meet & shake the hands

of these American Heroes. Try on their Kevlar to experience the weight of their body armor. Learn how you can help welcome other soldiers home.

Regretfully, LTC Ken Harvey, Commander of the 1-15 Infantry, is unable to be at the Festival because he's still in Iraq, but standing in his place is

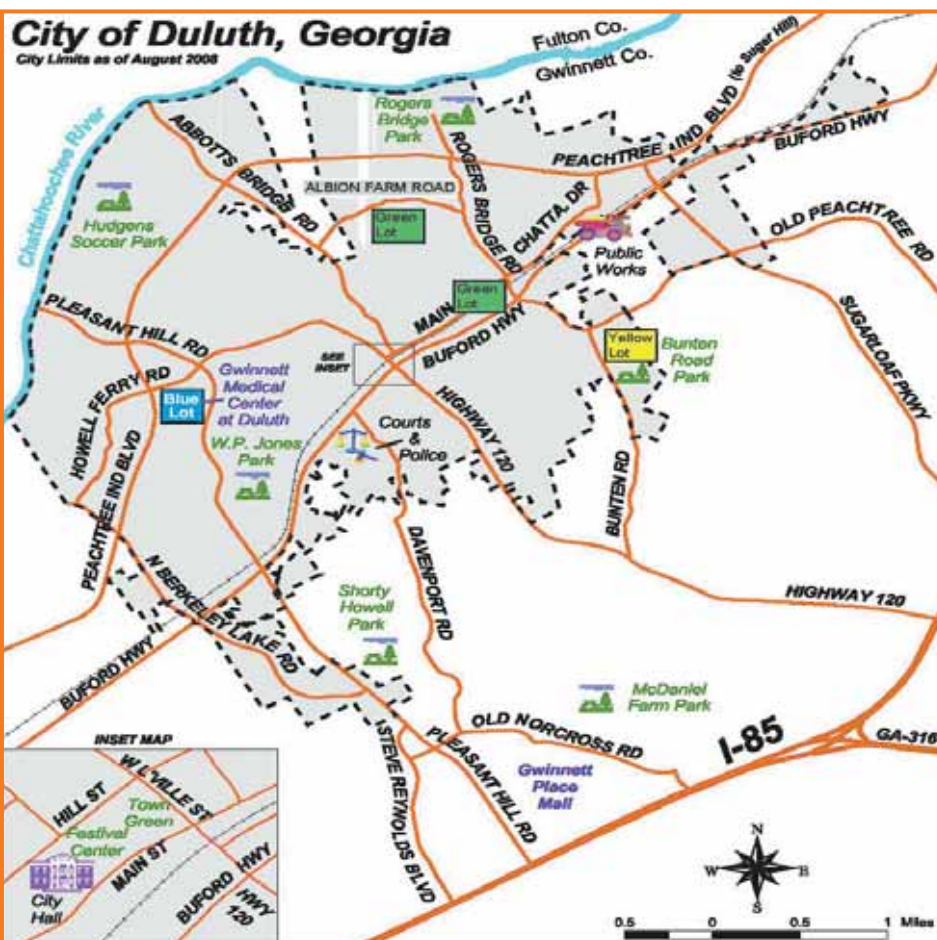


his family: wife, Janice, and children, Kait, Jake, Zach & Emily. When asked, "What does Duluth Fall Festival mean to your family and you," Mrs. Harvey stated, "The Festival has become a tradition in our family. We feel like we're at 'home' from the moment we arrive. The citizens always extend such a warm welcome, and it's heartwarming to see them embracing the soldiers and thanking them for their service. Our children refer to Duluth as 'the town just north of Atlanta where they love the military'. This Fall Festival will be bitter-sweet for us as it will be the last one our family will attend with the 1-15. But as we move to our next job with the Army, I know the legacy of what the Duluth Fall Festival and Hugs for Our

Soldiers provides to our troops will continue on."

Thanks to the efforts of Hugs for Our Soldiers, a Tennessee-based organization originally founded in Duluth by Kathy Orcutt, and through donations by Russ & Melanie Sheldon and numerous Duluth businesses, these soldiers will receive breakfast sandwiches from Burger King to welcome them to Duluth, a complimentary lunch from Boudreaux's, free hotel stay, dinner at Dave & Buster's and attend a concert at Wild Bill's. Thank you, Duluth, for helping the Festival roll out the red carpet for our military and for being the patriotic community that you are!!

To learn more about Hugs for Our Soldiers, go to:
www.hugsforoursoldiers.org



Man's Corner at the Festival

Just imagine a place at the Duluth Fall Festival dedicated to and for men. Stuff with no lace on it. Come on over and enjoy the products and services that you like the most.

Here's a sample of what you can do – see Zero Turn Mowers, Stihl Power Equipment and Makita Power Tools, practice hitting a golf ball, sample chicken wings, and see the newest Jaguars.

Bill Vanderford will answer your Fishing questions and you can join the folks at the Bass Pro Shops tent.

Pick up schedules for the Gwinnett Gladiators or Gwinnett Braves and find out how you can support the Wounded Warrior's organization.

Check out the neat "outdoor kitchens" with custom wood-work cabinets for the Kamado Ceramic Grill Smokers and ...

Did we say "Football" -- Yes, Football with a Truck all ready for a tailgating party. Ya'll come!

Here is a partial listing of our sponsors represented in Man's Corner:

Howard Brothers Hardware
www.howardbrothers.com

Bass Pro Shops
www.basspro.com

The Georgia Trail at Sugarloaf
www.gatrail.com

Lou Sobh
www.lousobhbpg.com

Hennessey Jaguar Gwinnett
www.hennesseyjaguargwinnett.com

Gwinnett Gladiators Hockey
www.gwinnettgladiators.com

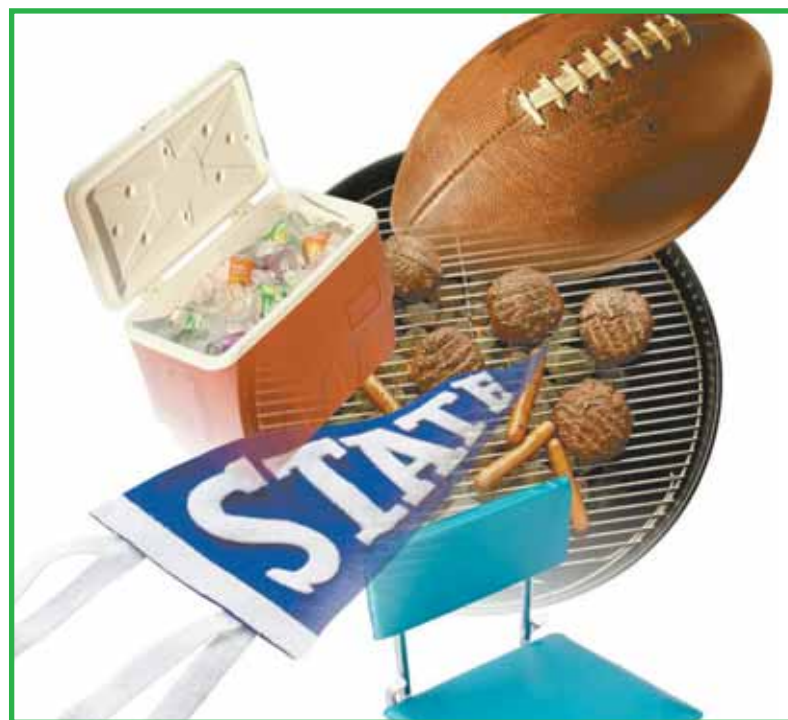
Bill Vanderford – Lanier Fishing Guide
www.fishinglanier.com

Gwinnett Braves
www.minorleaguebaseball.com

Posh Patios
www.deckkitchen.com

Empower Processing – Wounded Warriors
www.empowerourveterans.com

*Special Thanks to Worldly Concept DBA
Direct Satellite TV for the Football hook up
and all of our special sponsors.*



THE MILLS®
A SIMON® Company

MILLS MEANS MORE!

Mills Means More Selection! Shop Discover Mills - Georgia's value shopping, entertainment & dining destination! Find the best deals for what you need at stores including Saks Fifth Avenue OFF 5TH, Neiman Marcus Last Call, NikeFactoryStore, GUESS Factory Store, Kenneth Cole Company Store, Tommy Hilfiger Company Store, Levi's Outlet, adidas Outlet, Perry Ellis, Bass Pro Shops, Gymboree Outlet, Skechers Outlet, and Crocs. Entertainment destinations include Medieval Times Dinner & Tournament, AMC Theatres, and Dave & Busters. More Stores. More Brands. More Savings. More Fun!

Find us on:
facebook

twitter

I-85 and Sugarloaf Parkway in Lawrenceville, GA • 678-847-5000 • www.discovermills.com

**DISCOVER
MILLS®**

WHERE DISCOVER CARD IS THE SMART CHOICE™

Arts & Crafts

More than 250 carefully selected artists and crafts booths will line the Town Green and streets of Duluth at the Festival this year. Vendors will offer everything from paintings and photographs, wood crafts, pottery and glassware, furniture, floral arrangements and decorative accessories, baskets, adult and children's clothing, doll clothes and toys, jewelry, candles and soap, stitchery and many other items will be available to Festival-goers. Warning: With the variety of unique items, you are bound to find something that piques your interest and that you have to take home!

Most vendors are local or from the across the southeast. However, with our growing reputation as one of the best Festivals in the southeast, we are fortunate enough to have one vendor from as far away as Minnesota and another all the way from Virginia.

Several Arts & Crafts vendors return to the Festival year after year; a few have participated for more than 20 years. However, William Crissey, of Gwinnett Gallery, holds the record—he has participated in all 28 Festivals! When possible, returning vendors are located in the same general area. However, if you have trouble finding

a specific vendor, visit the Information Booth on Main Street or ask one of our Zone Coordinators (a volunteer with a walkie-talkie) for help. They will gladly guide you to the vendor that you are seeking.





- The Georgia Trail: Open to the Public
- Perfect location for "Special Corporate Events"
- 9-Hole Golf Course
- Putt-Putt ONLY \$3 Kids / \$5 Adults
- Natural Grass Driving Range
- Birthday Parties (All ages)
- PGA Professionals on staff
- Private and Group Lessons/Clinics

The Georgia Trail
at Sugarloaf

The Georgia Trail and Augusta's chef managed restaurant with full bar is an affordable family friendly option. Visit the Georgia Trail today! located just seconds from I-85 SOUTH at exit 105, learn more at gatrail.com or call (770) 497-GOLF.



Augusta's Restaurant

SAVE 50% OFF NEXT ROUND OF GOLF OR BUY ONE MEAL RECEIVE ONE MEAL 50% OFF AT AUGUSTA'S

SPECIAL THANKS FROM THE Duluth Fall Festival!

The Duluth Fall Festival Committee would like to thank the many individuals, companies, schools, churches, and civic organizations, for their support of the Duluth Fall Festival. We especially recognize the following who have contributed so much in many different ways. This includes the City of Duluth, our working partners, without whose help and cooperation it would be impossible to put on this Festival.

Duluth City Council & Mayor Nancy Harris
Duluth City Employees & Phil McLemore
Duluth City Clerk, Teresa Lynn
Duluth Economic Development Manager, Chris McGahee
Duluth Public Works Department & Audrey Turner
Duluth Parks Department & Kathy Marelle
Duluth Police Department & Chief Randy Belcher
Duluth Public Information & Marketing Director, Alisa Williams
Duluth Events Coordinator, Jayne Madigan
Duluth Festival Center Manager, Janice Yarbrough

Our Top Level Sponsors:

Gwinnett Community Bank — Tom & John Martin
Gwinnett Daily Post
AGCO — World Corporate Headquarters, Duluth
Lou Sobh — Gwinnett Place
SCANA Energy — Simone McKinney
Carnett's Duluth Car Wash — Sam Eskenazi
Gwinnett Medical Center — Duluth and Lawrenceville
The Fish 104.7
Suzanna's Kitchen — Barbara Howard
J.O. King — Russ & Melanie Sheldon

Special Thanks to our Media Partners:

Gwinnett Daily Post — Eleanor Lawson
Solutions Marketing, LLC

104.7 The Fish — Chad Davis
News/Talk 750 WSB — Pat Tedeschi
WGKA AM 920 — Joel Foster
Talk 920 WGKA
WATC TV 57

Community Involvement:

Affiliated Graphics/Accent Mail — Mike Bressler
All Event Rentals — Dana White
Andersen, Tate, & Carr, PC
Bernard & Sharon Robertson — Duluth Fine Wines
Brooks Coleman "The Voice of the Festival"
Clearbuilt Technologies, Kerry Wolfe — Website
Corporate Expressions — Andy & Carolyn Kite
Dave Heydinger — Mathias Corporation
Duluth Kiwanis Club
Duluth Merchant's Association
Georgia Power Company
Gwinnett Community Bank and Employees
Gwinnett Hospital System —
Lea Bay, Diana Potts & Linda Bailey
Marsha Anderson Bomar — Christmas Party Location
McClellan, Rowland, Allen & Co., LLC
Payne-Corley House — Krista & Mike Ganley
All supporting restaurants for Taste of Duluth
Rock, Paper, Scissors — Randy & Cindy Sutt
All Festival Newspaper Advertisers
All Entertainers & Parade Participants
All Donors to the Silent and Live Auctions
Our 250 Arts & Crafts Vendors
2010 Chairperson — Gin Willis
2011 Chairperson — Wayne Herman

**AND...our 400
community volunteers!**

Silent Auction



Shout it out loud... the Silent Auction will host five auctions during the weekend, three on Saturday, and two on Sunday. We have a variety of great merchandise donated by Festival vendors

and local businesses, including many restaurant and service-oriented gift certificates, and gift baskets of all kinds.

If you have never participated in a silent auction before, here's how it works: A group of items are displayed with an attached bid sheet specifying the minimum opening bid as well as the minimum incrementing bid. To bid on an item, write your name on the first

available bid line, raising the bid by at least the minimum amount. If you are the highest bidder at closeout time, the item is yours!

Understandably, the Silent Auction tent gets quite busy when closeout time is near, so arrive in plenty of time to place your bids.

Closeout Times

Saturday — 1:00 p.m.,
3:00 p.m., 5:00 p.m.
Sunday — 2:00 p.m., 4:00 p.m.

SIMON

AROUND THE WORLD

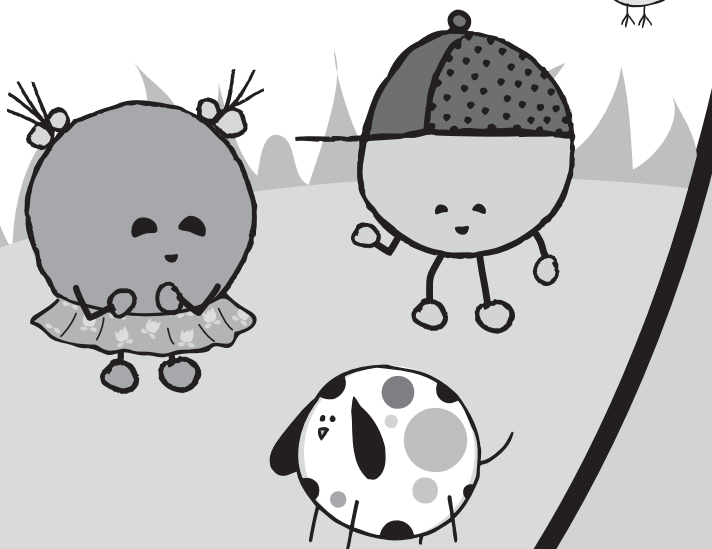
Saturday, September 25
2:00pm - 4:00pm • Center Court

This fun-filled day is our celebration in honor of Mega Mart opening soon!

Experience games, treats, crafts, entertainment and more from Korea, Japan, China, Australia, England and France!

Kidgits Club members will also enjoy a bouncy house, balloon artist and a special prize wheel!

Not a member? It's just \$5 to join.
 Visit Simon Guest Services for more information.



Sponsored by:



중앙일보
The Korea Daily

No.1 Media in Korea

**MEGA
MART**



SIMON
MALLS | more choices®

simon.com/kidgits

28th Annual

For Kids of All Ages: Carnival & Games

While you shop the Arts & Crafts booths, kids of all ages can stay busy at the Festival by visiting the Carnival and Games area. New this year, is a full-fledged commercial carnival with a variety of rides and

activities. And, even better: you don't have to wait until the Festival starts to go to the carnival! The carnival will open on Wednesday, September 22 and remain open until the Festival ends on Sunday.

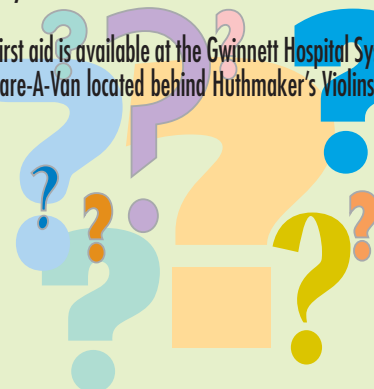
In addition to the carnival, the adjacent Games area provides inflatable slides and activities for kids 7 and under. All of these events are located on Main Street, across from City Hall. Don't worry about going hungry while you are in the Carnival and Games area; nearby booths will be selling cotton candy, popcorn, drinks, and standard Festival fare.



Where to Go for Help

If you need help while you are visiting the Festival, need assistance locating a specific vendor, or if you lose an item, stop by the Information and Lost & Found booth located in front of the General Store. You can also ask any volunteer for assistance.

First aid is available at the Gwinnett Hospital System Care-A-Van located behind Huthmaker's Violins.



About the Cover

Since 1985, all of the tabloid covers have featured local artists and contained either a Duluth or fall theme. This year's cover was created by local artist Ann Parsons Odum. Ann's pastel paintings have been used in numerous Duluth Fall Festival publications over the years. To see a collection of these specialty covers, visit the General Store during the Festival.

About the Festival T-Shirt

Each year, the Festival T-shirt design and color is a long anticipated surprise. The current T-shirt design and the Duluth Fall Festival logo were created by Duluth citizen Cindy Sutt of Rock, Paper, Scissors. The Festival Chairperson chooses the color of the shirt.

WINNETT PLACE
 I-85 at Exit 104
 Pleasant Hill Rd. • Duluth, GA
 Shopping Line® 770-476-5160.

Entertainment Schedule

Festival Center Stage Schedule

The **Festival Center stage** (the amphitheatre) showcases bands and dance groups.

Saturday September 25		
From	To	Performer
11:30	12:15	Opening Ceremony
12:20	12:25	Wildcat Cheerleaders
12:30	1:15	Mark Pitt
1:30	2:30	O.D. Rivero Band
2:45	3:45	Dixie Duncan
4:00	4:30	The Cindy Brown Dancers
4:45	5:45	Gypsies on Parole

Sunday September 26		
From	To	Performer
7:40	7:55	Jazzercise Sugarloaf
8:00	9:30	Road Race
10:00	11:30	Duluth First United Methodist Church
12:00	1:00	Royal Dance Academy
1:15	2:15	David Disharoon
2:30	3:30	Grafted By Grace
3:45	4:45	Ballroom Dance Clubs

Gazebo Stage Schedule

The **Gazebo stage** (on the upper town green) hosts acoustic groups in an intimate setting.

Saturday September 25		
From	To	Performer
12:30	1:15	Jordan Humphrey
1:30	2:15	Hoosier Daddy
2:30	3:15	Harm's Way
3:30	4:15	Miss Gail and the Jumpin' Kids
4:30	5:15	Erica Sunshine Lee

Sunday September 26		
From	To	Performer
11:30	12:15	Business Casual
12:30	1:15	Holly Johnson
1:30	2:15	Spies of Life
2:30	3:15	Bryan Edwards
3:30	4:15	Heidi and the Hushpuppies

Park Café Stage Schedule

The **Park Café stage** (beside The Park Café) features the duo of Lisa Lynne and George Tortorelli, playing Celtic music.

Saturday September 25		
From	To	Performer
12:00	6:00	Lisa Lynne and George Tortorelli

Sunday September 26		
From	To	Performer
12:00	5:00	Lisa Lynne and George Tortorelli



Visit the Gwinnett Daily Post Booth at the Duluth Fall Festival to Enter to Win these Fabulous Prizes!

Produced by Feld Entertainment



Disney ON ICE
Disney · PIXAR
TOY STORY 3

ENTER FOR YOUR CHANCE TO WIN A FAMILY FOUR-PACK OF TICKETS!

OCT. 13 - 17 PHILIPS ARENA
www.disneyonice.com

YOUR DREAMS LIVE ON STAGE!



DREAMGIRLS

WIN A PAIR OF TICKETS TO OPENING NIGHT!
OCT. 12-17 The Fox Theatre
broadwayacrossamerica.com

Cirque Dreams HOLIDAZE



WIN A PAIR OF TICKETS!
NOV. 30 - DEC. 5
COBB ENERGY PERFORMING ARTS CENTRE
cobbenergycentre.com

HIGH MUSEUM OF ART ATLANTA



Dalí
THE LATE WORK

high.org

WIN FOUR PASSES!

White Christmas THE MUSICAL



WIN ONE OF TWO PAIRS OF TICKETS!
NOV. 2-7 The Fox Theatre
theaterofthestars.com

Menopause The Musical



The Hilarious Celebration of Women and The Change!®

WIN A PAIR OF TICKETS!
NOV. 2-4
Performing Arts Center at Gwinnett Center
gwinnettcenter.com

5K Road Race

Did you eat too many funnel cakes, too many hot dogs, drink too many slushies? Well, come run or walk off those calories at the Duluth Fall Festival 5K.

Warm up starts at 7:40 a.m. with Sugarloaf Jazzercise Instructors Tammy Duffy and Marbry Lee. At 8:00 a.m. get ready, set, run/walk through historic downtown Duluth. After you cross the finish line behind the Festival Center with your winning time, we will be waiting for you with complimentary refreshments.

Just for participating, you will get a great colorful long-sleeved T-shirt. First place awards are presented to men and women competing in 15 age groups from age 10 and under through ages 75 and over.

Register for the Road Race by logging on to www.duluthfallfestival.org. Register by 9/17/10 to get the \$20.00 registration fee or the family discount \$70.00 for a family of four (\$15.00 each additional child). After 9/17/10 registration is

\$25.00 per person.

You don't have to be a runner to come and enjoy the sunrise, cheer on your family and friends. Then, stay for the morning worship service and the other Festival events.

Duluth Fall Festival 5K Road Race



Commemorative Bricks Available

Leave your mark on historic downtown Duluth with a personalized engraved brick in the Town Green. A commemorative brick is a great way to thank someone special, honor a friend or family member or show your support for the City of Duluth. Bricks come with an Honorary Deed signed by the Mayor of Duluth. To see a brick sample or place your order, visit the Information and Lost & Found booth.

Being Part of a Community
Means Caring for its People.

• A Tradition of Trust, Comfort and Understanding •

Bill Head Funeral Homes and Crematory, Inc.

Lilburn/Tucker
6101 Hwy 29
Tucker, GA 30084
770-564-2726



Bill Head
Owner Director
Family Owned

Duluth Chapel
3088 Highway 120
Duluth, GA 30096
770-476-2535



Charter Member, Independent Funeral Directors of Georgia.

Entertainment

Entertainment

As always, Elvis (Duluth's own Mark Pitt) will be in the building to kick off two days of continuous entertainment. And, walking throughout the Festival, puppeteer Kevin Pittman and His Forest Friends will entertain children of all ages.

With more than 20 acts on three stages, there will be something for everyone. After performing, the entertainers can be found at the Meet the Entertainers Tent beside the stage where they performed. This is the place to go to find out more information about your favorite acts and purchase their CDs, T-shirts and

other promotional items. You can also find out about booking them for an event. Because all of our entertainers perform non-gratis to benefit the Festival, we encourage you to support them with a purchase of their wares.

Our performers sound great thanks to our wonderful volunteer sound staff. Our two primary sound engineers, Earl Griffith (Festival Center stage) and Michael Robbins (Gazebo stage) graciously lend the Festival sound equipment and run our sound systems during the entire Festival.

For more information about the entertainers per-

forming at the Duluth Fall Festival, and links to their personal Web sites, go to the following Web address:

www.duluthfallfestival.com/entertainment.html



Discount

FABRIC

& Upholstery



**GRAND
OPENING
FREE
FABRIC!**

Designer Fabrics

678.417.9004 • 678.431.9666
Mon-Fri 10am-7pm • Sat 10am-5pm
3065-A Buford Hwy. • Duluth



Shop. Dine. Play. Downtown Duluth



**Hardeman Fine
Art Glass, Inc.**
770.476.7328

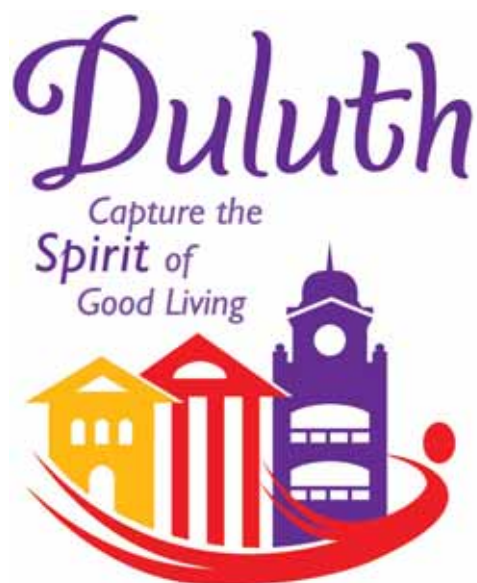
Llorens Stained Glass Studios
Memorial Windows, Ecclesiastical

www.llorensstainedglass.com
404.373.7374

3111 Main Street
Duluth, Georgia 30096

Since 1920

STEVE RINO'S
Pizza, Burgers, Wings, Subs & More
Downtown Duluth • On The Town Green
3117 Main Street • Duluth, GA 30096
770-622-2110
www.steverinosduluth.com



Poochfest 2010

TO BENEFIT THE DULUTH HISTORICAL SOCIETY

Bring your 4-legged friends for a fun day of pet play, pet adoptions, entertainment, & kids zone!

- Join the Pet Parade at 1:00 pm. Followed by 'Flicks on the Bricks' featuring Scooby Doo.
- Over 2 acres of vendors, food, and fun!
- Poster Art Contest with cash prizes and ribbons presented by Mayor Nancy Harris

For more info see: www.Poochfest.org



**SATURDAY,
OCT. 2ND,
10AM-5PM**

ON THE
DULUTH
TOWN GREEN

DULUTH GHOST WALKS
Learn the legends that lie beneath the Haunting Tales of Duluth
Now thru October
HISTORICAL GHOST WALKS - 7:30-9:00
PARANORMAL INVESTIGATIONS OF CITY CEMETERY - 9:00
For more information & Tickets, call 770.403.1795
Adults-\$15. Reservations preferred but not required.
Walkups Welcome. Walks start at Historic Downtown Duluth.
Cash - VISA - Mastercard • www.historicmysterywalks.com
Present this ad for \$3 off adult ticket

Atlanta Pinestraw

Est. 1989

Use Coupon code: **DULFALL FOR FREE DELIVERY WITH A MINIMUM BALES.**

*Must be within Duluth area for discount

(30096, 30097 or Suwanee to north side of Norcross)

We offer professional delivery or installation service of pine straw and many other types of mulches.

Thanks Duluth!

Because of our loyal customers we are celebrating out 21st year delivering quality & dependability!

770.623.4642 Office
Monday - Friday 7:30 to 4:30

Visit www.AtlantaPineStraw.net to see a list of products we offer **(not just pine straw, but many types of mulches too)**, get more information on our services and place an online order or send us an e-mail.

2010 Taste of Duluth

On September 16th, the Duluth Fall Festival volunteers honored sponsors and special guests at the annual Taste of Duluth. During this elegant evening, guests sampled menu items from several local restaurants, while enjoying wine, beer, and beverages supplied by nearby retailers. Musical group Tres de Solei set the atmosphere with their Celtic-inspired sounds. The Taste of Duluth is hosted by the Payne-Corley House and coordinated by Festival Volunteers Annette McIntosh and Annette Summerour.

Participants at the Taste of Duluth

Restaurants

Boudreaux's
Chocolate Perks
Costco Wholesale
Duluth Rexall Grill
Marlow's Tavern
Payne-Corley House
Park Café
Steaverino's
Stoney River Steaks
Sugo's

Taco Mac
The Patio
Tilted Kilt

Beverage Retailers

Duluth Fine Wine
Eagle Rock Distributors
Starbucks
Sweetwater Package
World Beverage

Flower Arrangements ... Nature's Elegance

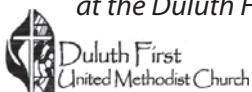


Congratulations to Troop 419

Boy Scouts of America, Duluth First United Methodist Church
on Celebrating 100 Years of Boy Scouting in America!



Thank You for all you do in serving our community and especially at the Duluth Fall Festival as trash cleanup volunteers.



BOY SCOUTS OF AMERICA®

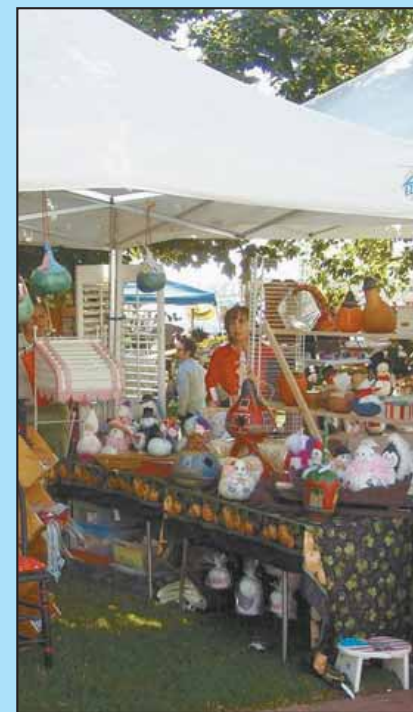
Duluth First United Methodist Church • 3208 Duluth Hwy. • Duluth, GA 30096

General Store & Auction

At the Festival General store, you can find a variety of seasonal merchandise to decorate for autumn. In addition to fall knick-knacks, you will find Festival-related wares, such as reusable shopping bags with the Festival logo on them. Other items available in the General Store include Festival T-shirts (both adult and children) as well as copies of the current newspaper tabloid.

Besides being your Festival merchandise headquarters, the General Store is also an easily spotted landmark. You'll recognize it as the tent surrounded with fall decorations, complete with mums, pumpkins and scarecrows. It is centrally located on Main Street, near the flag pole in the Festival Courtyard. All volunteers can guide you to it. Consider using it as a meeting place to connect with friends during this busy weekend.

At 3 p.m. on Sunday, come to the General Store for a special auction of the Festival decorations. Items to be auctioned include the pumpkins and mums displayed at the Festival.



**Duluth First
United Methodist Church**

*"Changing Lives
in the Name of Christ"*

3208 Duluth Hwy 120 • 770.476.3776 • www.duluthumc.org

**Join us for worship on the Town Green
at 10 a.m. on Sunday, September 26.**

**Come see us at the Funnel Cake Booth!
All of our profits go to Youth Missions Outreach.**

Sunday Worship Services:

- Traditional Worship:
8:15, 9:30 & 11:00 a.m.
- Contemporary Worship
in the Grand Hall: 9:30 a.m.
- Children's Worship (grades K-5):
9:30 a.m. in the Youth Center
- Childcare provided during all services.
- Sunday Night Youth: 5:30 p.m.
in the Youth Center

Wednesday Evening Programs:

- Dinner at 5 p.m. with Bible Studies and Ministries for Adults, Youth and Children until 9:00 p.m.
- Youth Prayer & Worship Time: 6:15 p.m. in the Youth Center
- Youth Group Bible Study:
6:45 p.m. in the Youth Center
- T.L.C. - Together Learning about Christ (grades K-4): 6:00 p.m.
- 5th Grade Bible Study: 5:45 p.m.
- Book Bunch (ages 3-4): 6:10 p.m.



**Saturday and Sunday
September 25th & 26th, 2010
Free Admission!**

As a member of this community, it gives us great pleasure to once again support this event as its Entertainment Sponsor. For 28 years Gwinnett Community Bank has watched the Duluth Fall Festival grow into one of the largest & most successful annual events of its kind. Community is so important to us that we proudly made it a part of our name. Come be a part of the celebration that honors the truly important things in life ... your family, your friends and your hometown.



The Duluth Fall Festival Committee would like to thank GWINNETT COMMUNITY BANK for always sponsoring our schedule page and for being OUR TOP SPONSOR IN 2010.



SCHEDULE of Events

Saturday Sept. 25th

Booths Open	9:00
Festival Parade	10:00
(roads closed; shuttle service suspended)	
Opening Ceremony	11:30
Music & Entertainment Begins	12:30
(3 stages)	
Festival Closes	6:00

Sunday Sept. 26th

Road Race Warmup	7:40
5K Road Race	8:00
Booths Open	9:00
Worship on the Green	10:00
Music & Entertainment Begins	12:00
(3 stages)	
Decorations Auction	3:00
(General Store)	
Festival Ends	5:00

**For More Information:
www.duluthfallfestival.com**